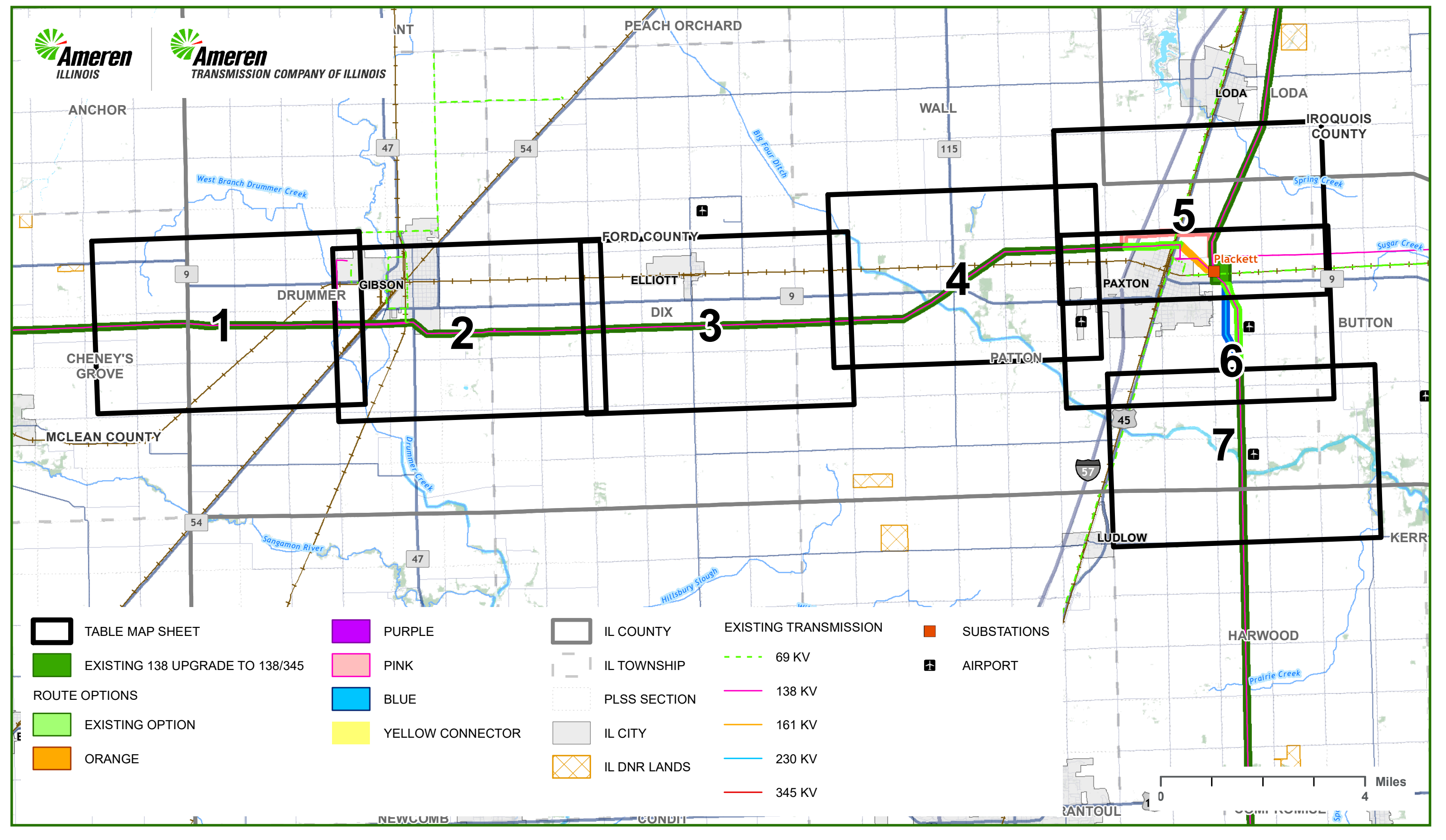
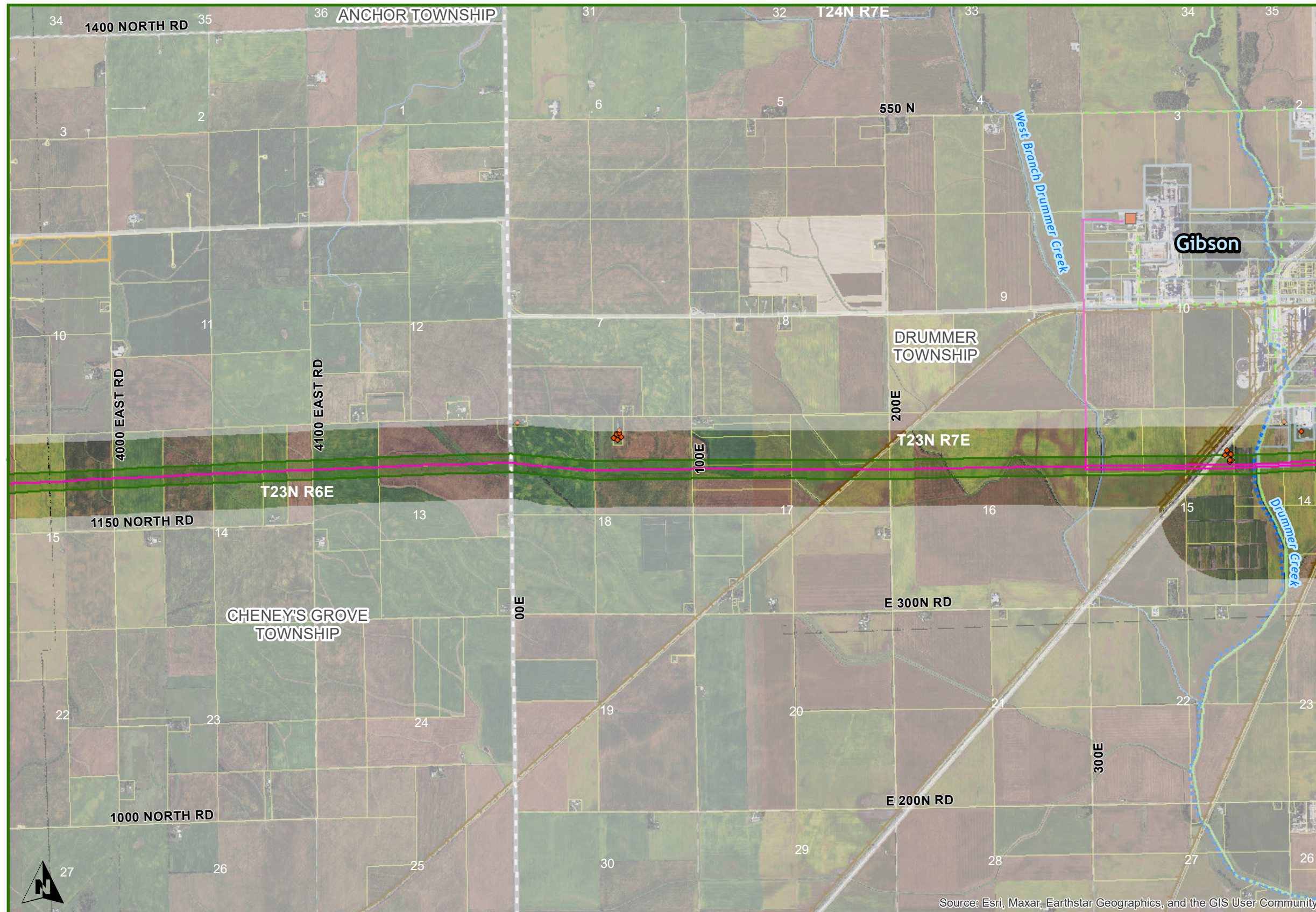


# CENTRAL ILLINOIS GRID TRANSFORMATION PROGRAM - FORD COUNTY TABLE MAP INDEX



**DISCLAIMER:** The information provided on this map is for discussion purposes only. Ameren Transmission Company of Illinois (ATXI) and Ameren Illinois is not bound in any way to the representations reflected on this map. This map does not represent a final determination by Ameren Illinois and ATXI as to route selection, and Ameren Illinois and ATXI is not restricted or barred from modifying or deviating from the routes proposed, or considering new or different routes. Illinois Commerce Commission Staff or other parties may also propose new or modified routes. All routes are subject to change pending Illinois Commerce Commission approval.





## FORD - 1

### Legend

- EXISTING 138 UPGRADE TO 138/345
- ROUTE OPTIONS
  - EXISTING OPTION
  - ORANGE
  - PURPLE
  - PINK
  - BLUE
  - YELLOW CONNECTOR
  - AREA EXCLUDED FOR ROUTING
  - SUBSTATIONS
- EXISTING TRANSMISSION
  - 69 KV
  - 138 KV
  - 161 KV
  - 230 KV
  - 345 KV
- COUNTY
- TOWNSHIP
- CITY
- PARCELS
- IL DNR LANDS
- IL DNR PRESERVATION AREA
- IL DNR NATURAL AREA
- RAILROAD
- WATERBODY
- STREAM
- IL BIOLOGICAL SIGNIFICANCE STREAM
- NON-RESIDENCE
- RESIDENCE
- SCHOOL OR COLLEGE
- H HOSPITALS
- GOLF COURSE
- + CEMETRY
- ◇ PLACE OF WORSHIP
- ⊙ AIR NAVIGATION DEVICE
- ✈ AIRPORT
- ⊙ COMMUNICATION TOWER

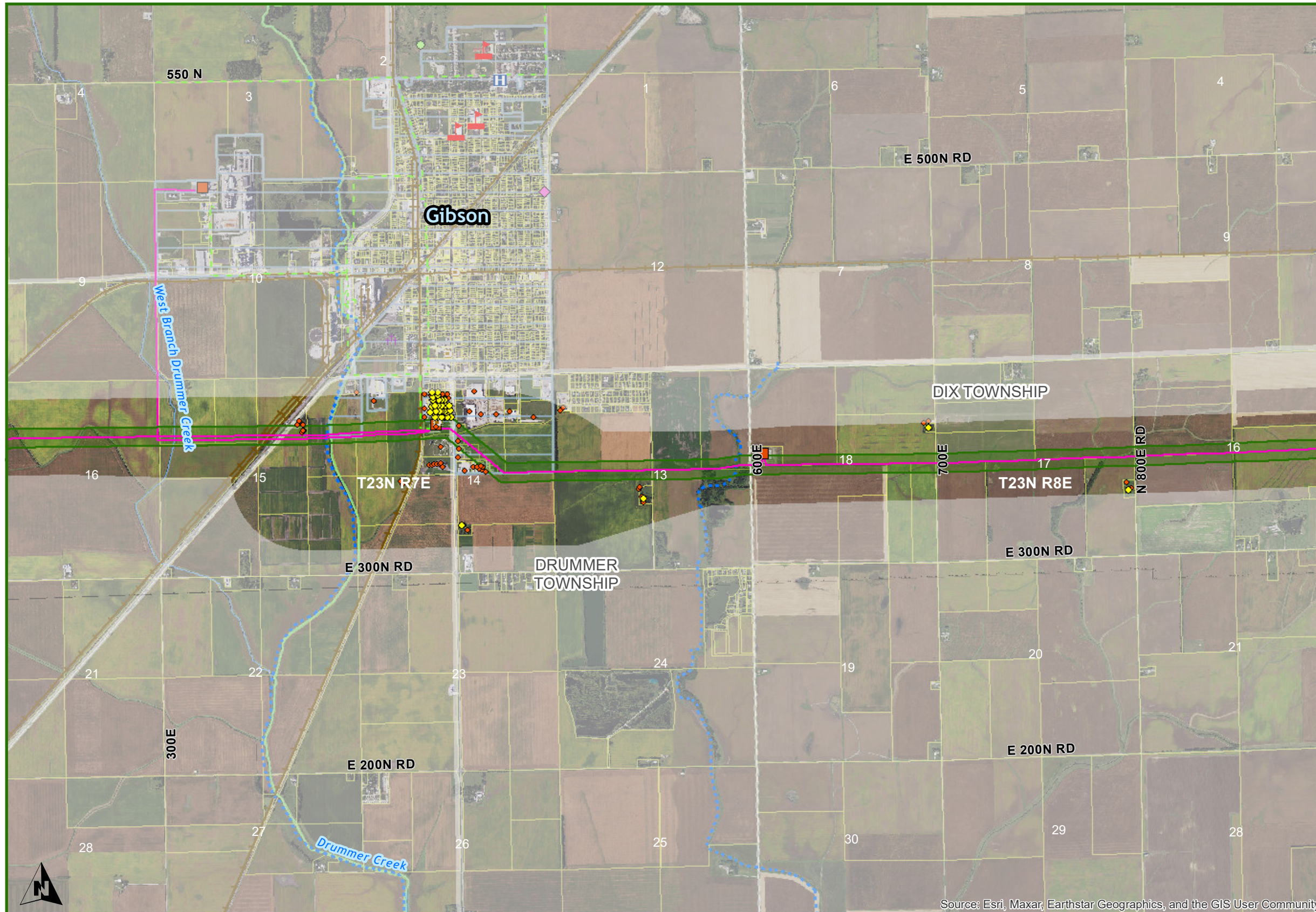
Source: Esri, Maxar, Earthstar Geographics, and the GIS User Community

**DISCLAIMER:** The information provided on this map is for discussion purposes only. Ameren Transmission Company of Illinois (ATXI) and Ameren Illinois is not bound in any way to the representations reflected on this map. This map does not represent a final determination by Ameren Illinois and ATXI as to route selection, and Ameren Illinois and ATXI is not restricted or barred from modifying or deviating from the routes proposed, or considering new or different routes. Illinois Commerce Commission Staff or other parties may also propose new or modified routes. All routes are subject to change pending Illinois Commerce Commission approval.

0 1,200 2,400 Feet



## FORD - 2



### Legend

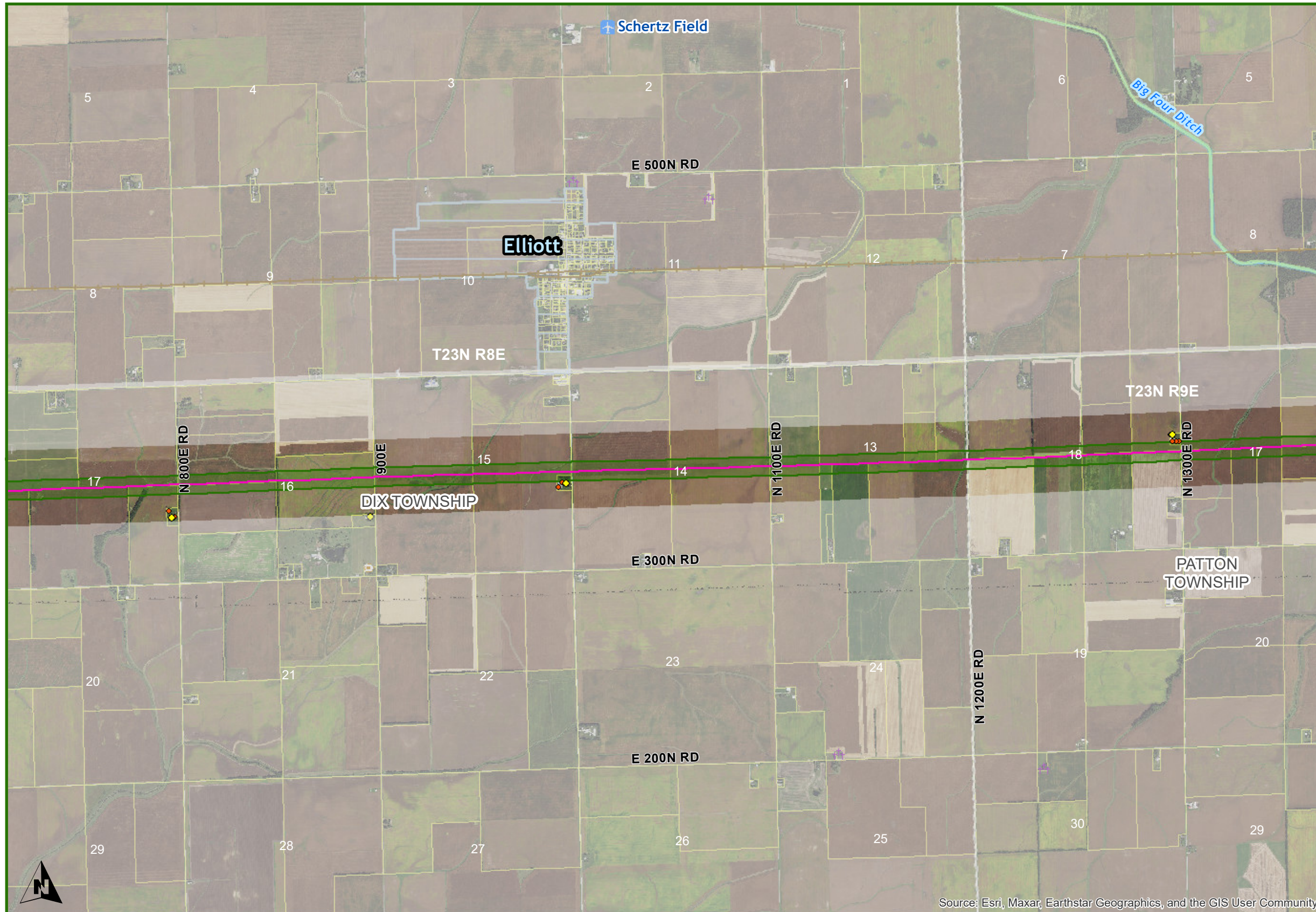
- EXISTING 138 UPGRADE TO 138/345
- ROUTE OPTIONS**
- EXISTING OPTION
- ORANGE
- PURPLE
- PINK
- BLUE
- YELLOW CONNECTOR
- AREA EXCLUDED FOR ROUTING
- SUBSTATIONS
- EXISTING TRANSMISSION**
- 69 KV
- 138 KV
- 161 KV
- 230 KV
- 345 KV
- COUNTY
- TOWNSHIP
- CITY
- PARCELS
- IL DNR LANDS
- IL DNR PRESERVATION AREA
- IL DNR NATURAL AREA
- RAILROAD
- WATERBODY
- STREAM
- IL BIOLOGICAL SIGNIFICANCE STREAM
- NON-RESIDENCE
- RESIDENCE
- SCHOOL OR COLLEGE
- HOSPITALS
- GOLF COURSE
- CEMETRY
- PLACE OF WORSHIP
- AIR NAVIGATION DEVICE
- AIRPORT
- COMMUNICATION TOWER

Source: Esri, Maxar, Earthstar Geographics, and the GIS User Community

**DISCLAIMER:** The information provided on this map is for discussion purposes only. Ameren Transmission Company of Illinois (ATXI) and Ameren Illinois is not bound in any way to the representations reflected on this map. This map does not represent a final determination by Ameren Illinois and ATXI as to route selection, and Ameren Illinois and ATXI is not restricted or barred from modifying or deviating from the routes proposed, or considering new or different routes. Illinois Commerce Commission Staff or other parties may also propose new or modified routes. All routes are subject to change pending Illinois Commerce Commission approval.

0 1,200 2,400 Feet





## FORD - 3

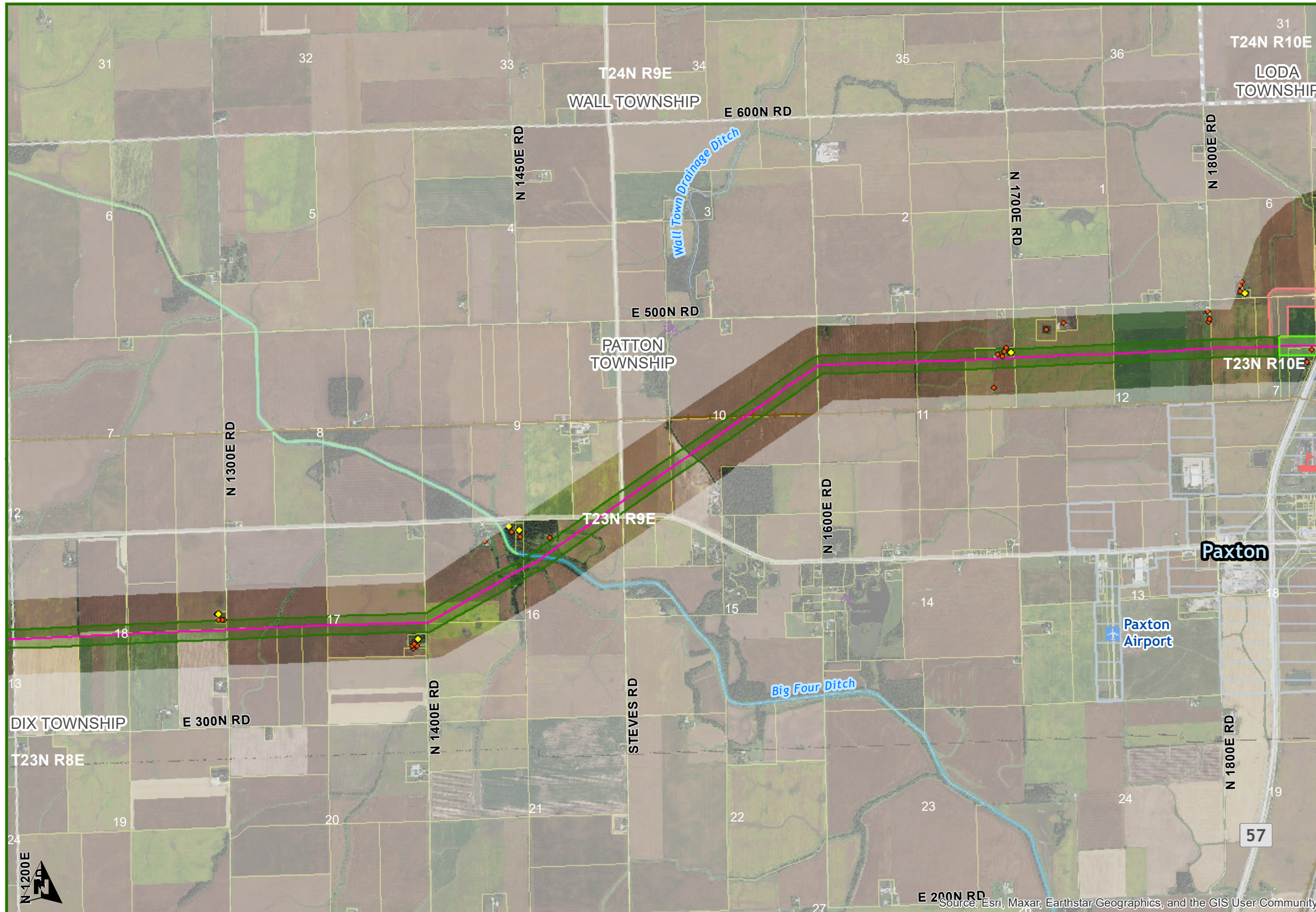
### Legend

- EXISTING 138 UPGRADE TO 138/345
- ROUTE OPTIONS**
- EXISTING OPTION
- ORANGE
- PURPLE
- PINK
- BLUE
- YELLOW CONNECTOR
- AREA EXCLUDED FOR ROUTING
- SUBSTATIONS
- EXISTING TRANSMISSION**
- 69 KV
- 138 KV
- 161 KV
- 230 KV
- 345 KV
- COUNTY
- TOWNSHIP
- CITY
- PARCELS
- IL DNR LANDS
- IL DNR PRESERVATION AREA
- IL DNR NATURAL AREA
- RAILROAD
- WATERBODY
- STREAM
- IL BIOLOGICAL SIGNIFICANCE STREAM
- NON-RESIDENCE
- RESIDENCE
- SCHOOL OR COLLEGE
- HOSPITALS
- GOLF COURSE
- CEMETRY
- PLACE OF WORSHIP
- AIR NAVIGATION DEVICE
- AIRPORT
- COMMUNICATION TOWER

**DISCLAIMER:** The information provided on this map is for discussion purposes only. Ameren Transmission Company of Illinois (ATXI) and Ameren Illinois is not bound in any way to the representations reflected on this map. This map does not represent a final determination by Ameren Illinois and ATXI as to route selection, and Ameren Illinois and ATXI is not restricted or barred from modifying or deviating from the routes proposed, or considering new or different routes. Illinois Commerce Commission Staff or other parties may also propose new or modified routes. All routes are subject to change pending Illinois Commerce Commission approval.

0 1,200 2,400 Feet





## FORD - 4

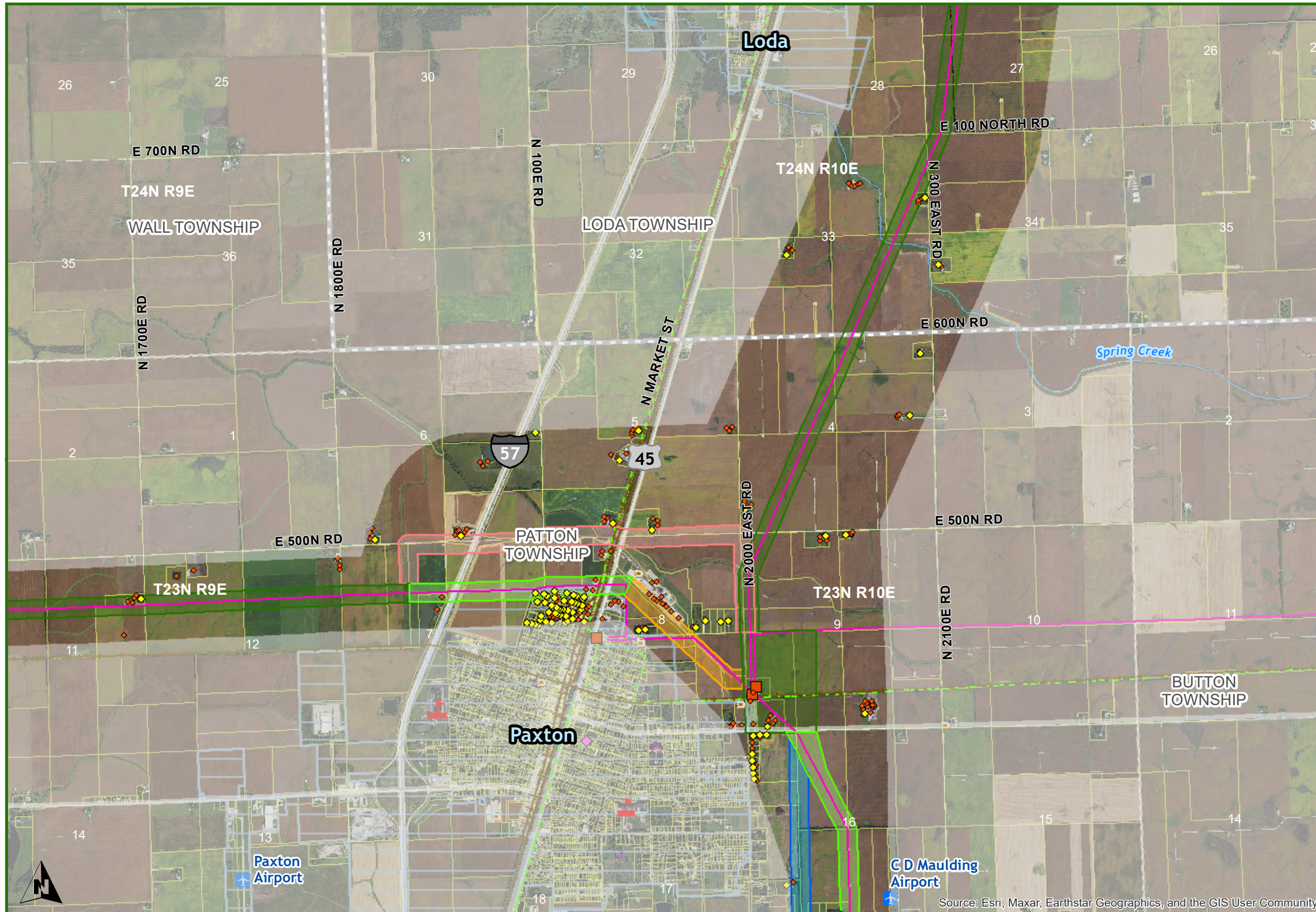
### Legend

- EXISTING 138 UPGRADE TO 138/345
- ROUTE OPTIONS**
- EXISTING OPTION
- ORANGE
- PURPLE
- PINK
- BLUE
- YELLOW CONNECTOR
- AREA EXCLUDED FOR ROUTING
- SUBSTATIONS
- EXISTING TRANSMISSION**
- 69 KV
- 138 KV
- 161 KV
- 230 KV
- 345 KV
- COUNTY
- TOWNSHIP
- CITY
- PARCELS
- IL DNR LANDS
- IL DNR PRESERVATION AREA
- IL DNR NATURAL AREA
- RAILROAD
- WATERBODY
- STREAM
- IL BIOLOGICAL SIGNIFICANCE STREAM
- NON-RESIDENCE
- RESIDENCE
- SCHOOL OR COLLEGE
- HOSPITALS
- GOLF COURSE
- CEMETRY
- PLACE OF WORSHIP
- AIR NAVIGATION DEVICE
- AIRPORT
- COMMUNICATION TOWER

**DISCLAIMER:** The information provided on this map is for discussion purposes only. Ameren Transmission Company of Illinois (ATXI) and Ameren Illinois is not bound in any way to the representations reflected on this map. This map does not represent a final determination by Ameren Illinois and ATXI as to route selection, and Ameren Illinois and ATXI is not restricted or barred from modifying or deviating from the routes proposed, or considering new or different routes. Illinois Commerce Commission Staff or other parties may also propose new or modified routes. All routes are subject to change pending Illinois Commerce Commission approval.

0 1,200 2,400 Feet





## FORD - 5

### Legend

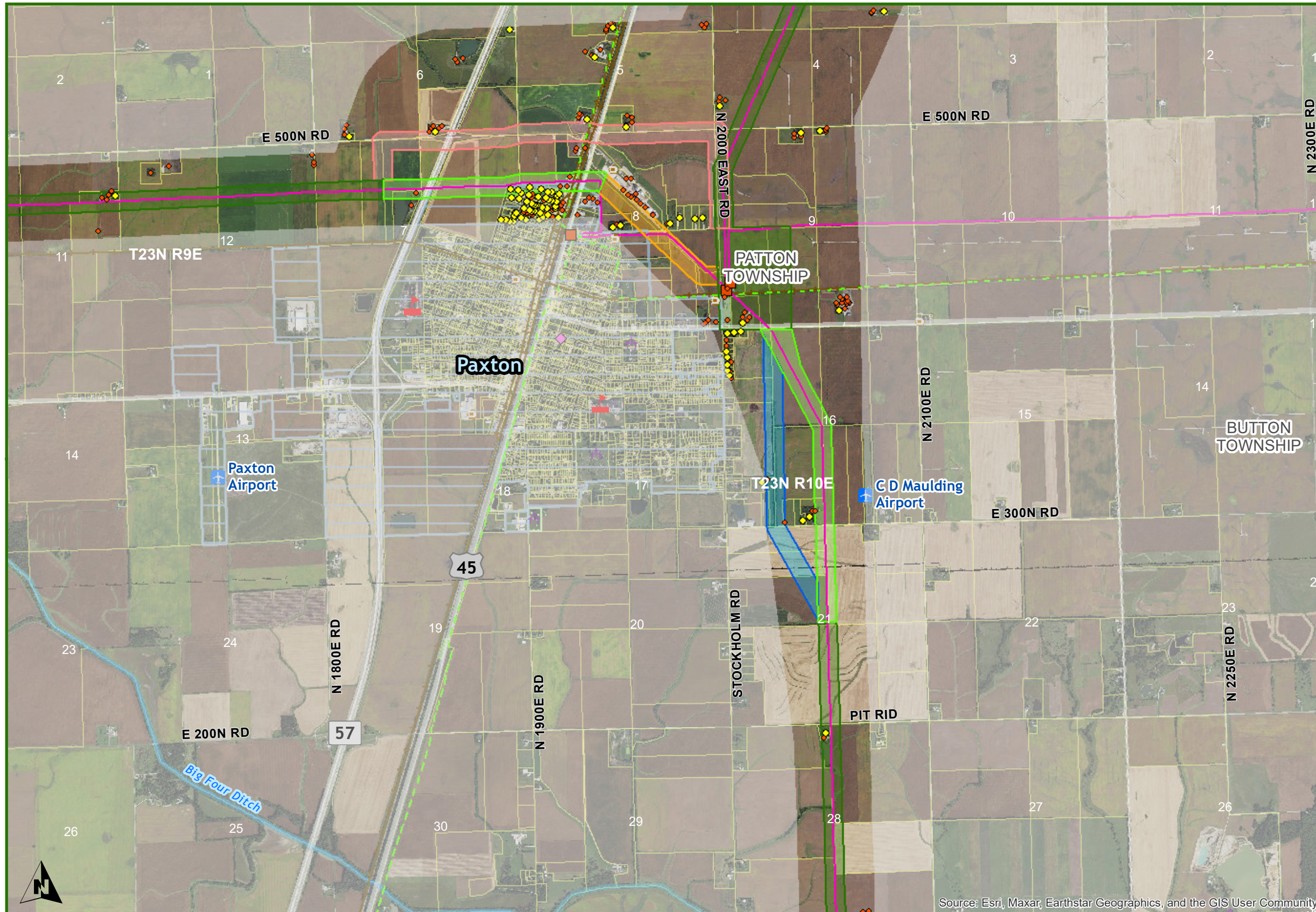
- EXISTING 138 UPGRADE TO 138/345
- ROUTE OPTIONS**
- EXISTING OPTION
- ORANGE
- PURPLE
- PINK
- BLUE
- YELLOW CONNECTOR
- AREA EXCLUDED FOR ROUTING
- SUBSTATIONS
- EXISTING TRANSMISSION**
- 69 KV
- 138 KV
- 161 KV
- 230 KV
- 345 KV
- COUNTY
- TOWNSHIP
- CITY
- PARCELS
- IL DNR LANDS
- IL DNR PRESERVATION AREA
- IL DNR NATURAL AREA
- RAILROAD
- WATERBODY
- STREAM
- IL BIOLOGICAL SIGNIFICANCE STREAM
- NON-RESIDENCE
- RESIDENCE
- SCHOOL OR COLLEGE
- H HOSPITALS
- GOLF COURSE
- + CEMETRY
- ◆ PLACE OF WORSHIP
- AIR NAVIGATION DEVICE
- ✈ AIRPORT
- COMMUNICATION TOWER

**DISCLAIMER:** The information provided on this map is for discussion purposes only. Ameren Transmission Company of Illinois (ATXI) and Ameren Illinois is not bound in any way to the representations reflected on this map. This map does not represent a final determination by Ameren Illinois and ATXI as to route selection, and Ameren Illinois and ATXI is not restricted or barred from modifying or deviating from the routes proposed, or considering new or different routes. Illinois Commerce Commission Staff or other parties may also propose new or modified routes. All routes are subject to change pending Illinois Commerce Commission approval.

0 1,200 2,400 Feet

Source: Esri, Maxar, Earthstar Geographics, and the GIS User Community





## FORD - 6

### Legend

- EXISTING 138 UPGRADE TO 138/345
- ROUTE OPTIONS
  - EXISTING OPTION
  - ORANGE
  - PURPLE
  - PINK
  - BLUE
  - YELLOW CONNECTOR
  - AREA EXCLUDED FOR ROUTING
- SUBSTATIONS
- EXISTING TRANSMISSION
  - 69 KV
  - 138 KV
  - 161 KV
  - 230 KV
  - 345 KV
- COUNTY
- TOWNSHIP
- CITY
- PARCELS
- IL DNR LANDS
- IL DNR PRESERVATION AREA
- IL DNR NATURAL AREA
- RAILROAD
- WATERBODY
- STREAM
- IL BIOLOGICAL SIGNIFICANCE STREAM
- NON-RESIDENCE
- RESIDENCE
- SCHOOL OR COLLEGE
- HOSPITALS
- GOLF COURSE
- CEMETRY
- PLACE OF WORSHIP
- AIR NAVIGATION DEVICE
- AIRPORT
- COMMUNICATION TOWER

Source: Esri, Maxar, Earthstar Geographics, and the GIS User Community

**DISCLAIMER:** The information provided on this map is for discussion purposes only. Ameren Transmission Company of Illinois (ATXI) and Ameren Illinois is not bound in any way to the representations reflected on this map. This map does not represent a final determination by Ameren Illinois and ATXI as to route selection, and Ameren Illinois and ATXI is not restricted or barred from modifying or deviating from the routes proposed, or considering new or different routes. Illinois Commerce Commission Staff or other parties may also propose new or modified routes. All routes are subject to change pending Illinois Commerce Commission approval.

0 1,200 2,400 Feet



