

# ROUTING PROCESS IN TAZEWELL COUNTY

Routing a transmission line is a phased process that involves collaboration with agencies, community members and landowners to collect information that helps our team understand and identify opportunities and sensitivities within Tazewell County. Review the steps below to see how we came up with our Preliminary Route Alternatives.



## STEP 1: DEFINE STUDY AREA

Our team started by using data from publicly available data sources to create our Study Area. We considered existing utility corridors, resource areas, natural environment data and field survey data to develop a Study Area that provides feasible routing opportunities.



## STEP 2: DEVELOP ROUTE SEGMENTS

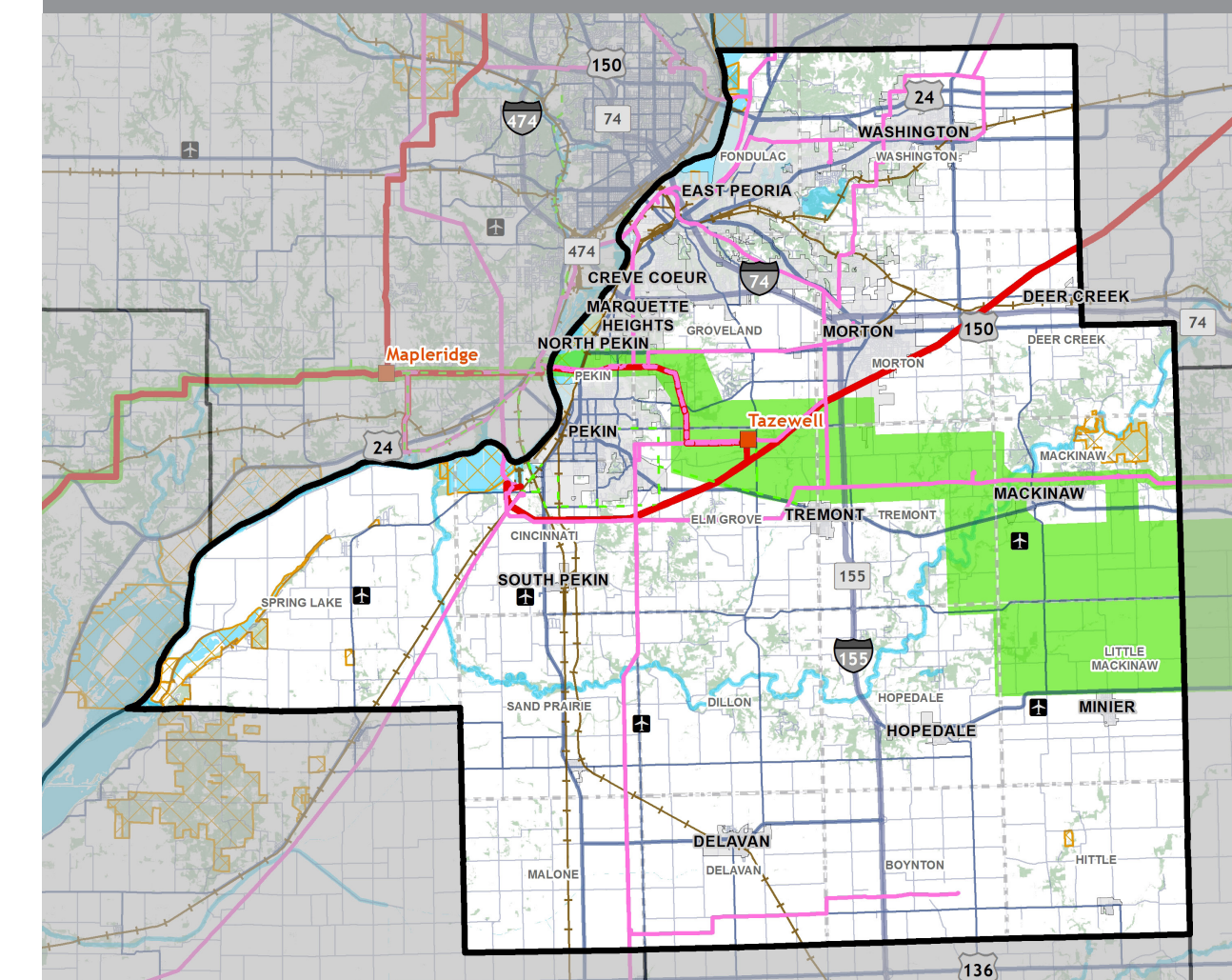
Then our team used data collected from our stakeholders and federal, state and local agencies to develop potential Route Corridors based on the three categories of routing criteria: Opportunities/Sensitivities, Technical Guidelines and Statutory Requirements.



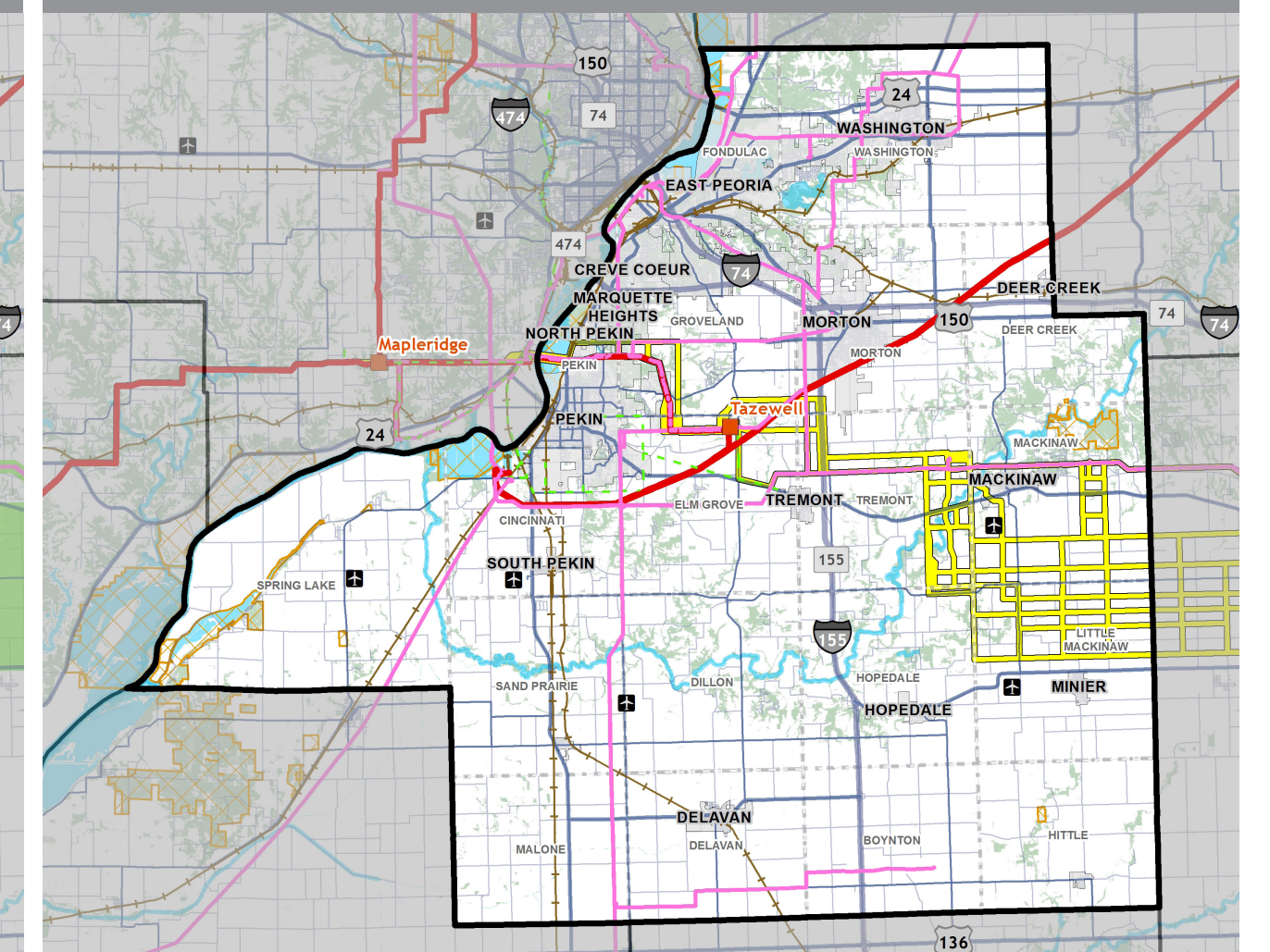
## STEP 3: DEVELOP PRELIMINARY ROUTE ALTERNATIVES

Using the routing criteria, as well as input received from stakeholders, landowners and community members during our first series of engagement in August 2023, our team developed Preliminary Route Alternatives.

Study Area Map



Route Segments Map



Preliminary Route Alternatives Map

