

WHAT WE HEARD IN TAZEWELL COUNTY

We appreciate the active participation and input community members and stakeholders provided during the first series of engagement of the Route Segments in August 2023. All input received was reviewed and considered during the development of the Preliminary Route Alternatives.

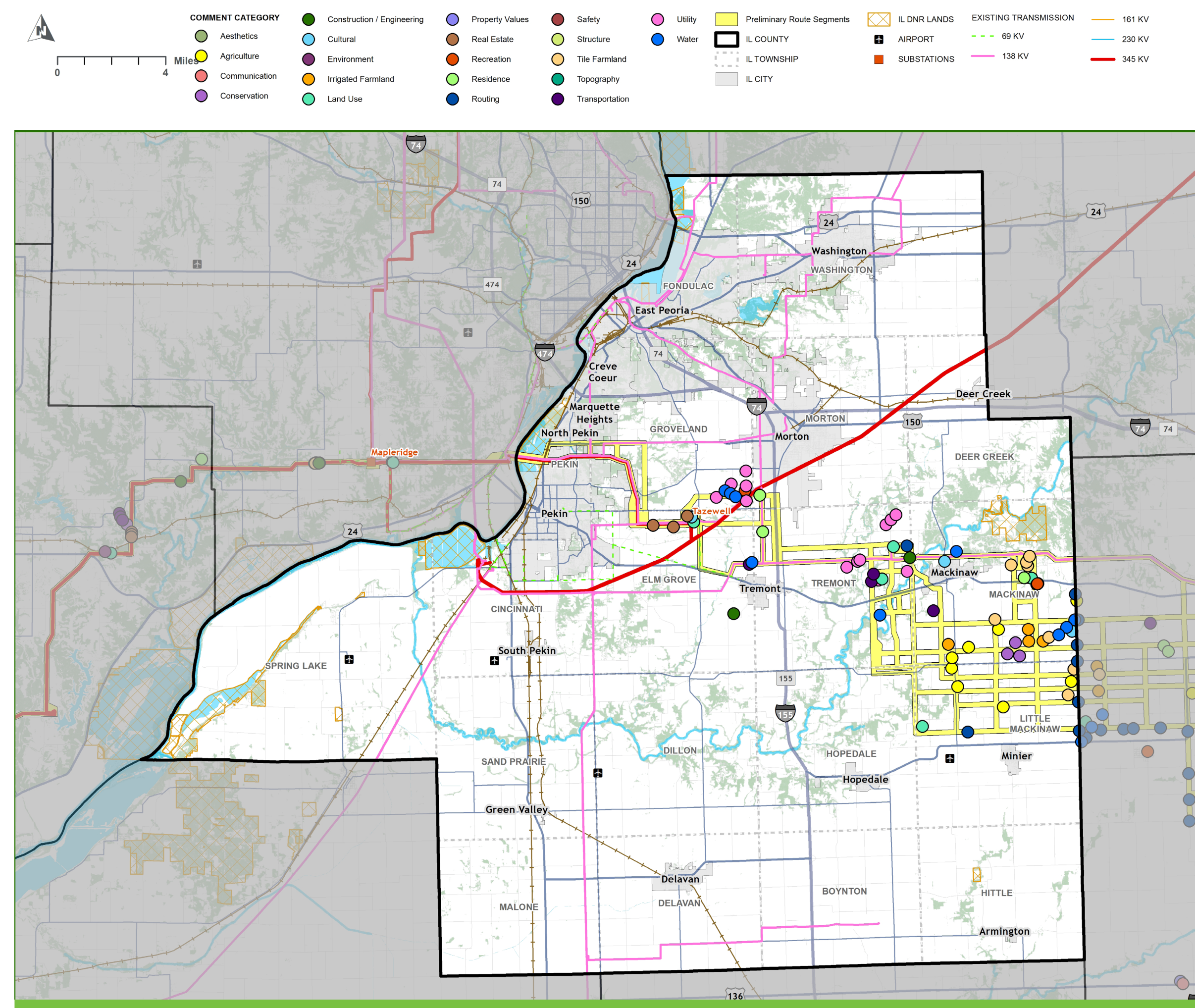
In general, most comments fit into the following categories:

- Utility
- Water
- Agriculture
- Tile Farmland
- Routing

First Series of Engagement - Sensitivities Results

We asked community members and stakeholders during our first series of engagement to tell us what sensitivities are most important to you.

Route Segments Map



Data on this map includes comments from our Stakeholder Workshop and first series of engagement.

HERE'S WHAT WE HEARD:

- 18% Utility
- 12% Water
- 10% Agriculture
- 10% Tile Farmland
- 8% Routing
- 6% Land Use
- 5% Recreation
- 5% Residence
- 5% Transportation
- 5% Irrigated Farmland
- 4% Conservation
- 4% Cultural
- 4% Real Estate
- 3% Construction/Engineering

