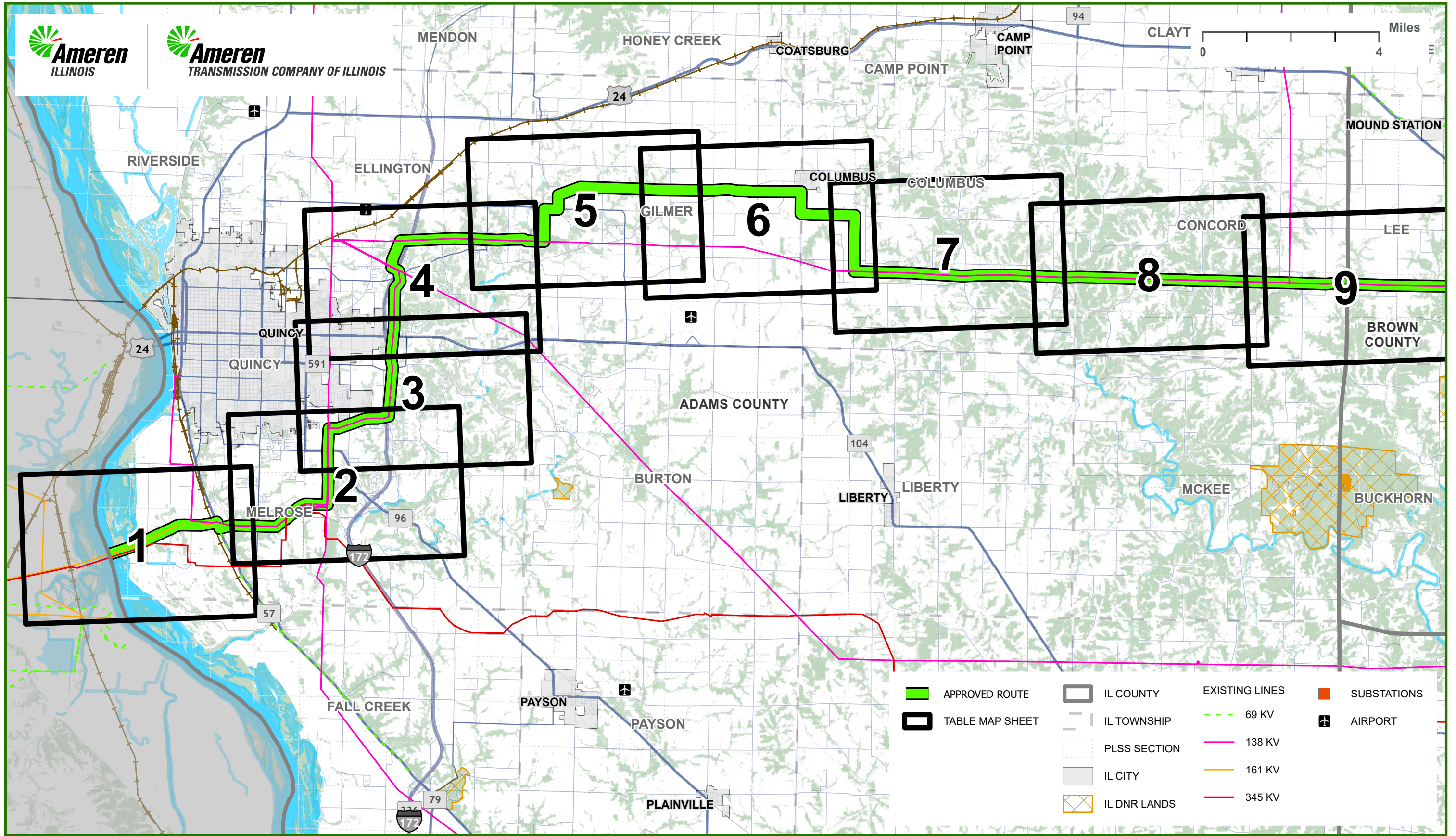
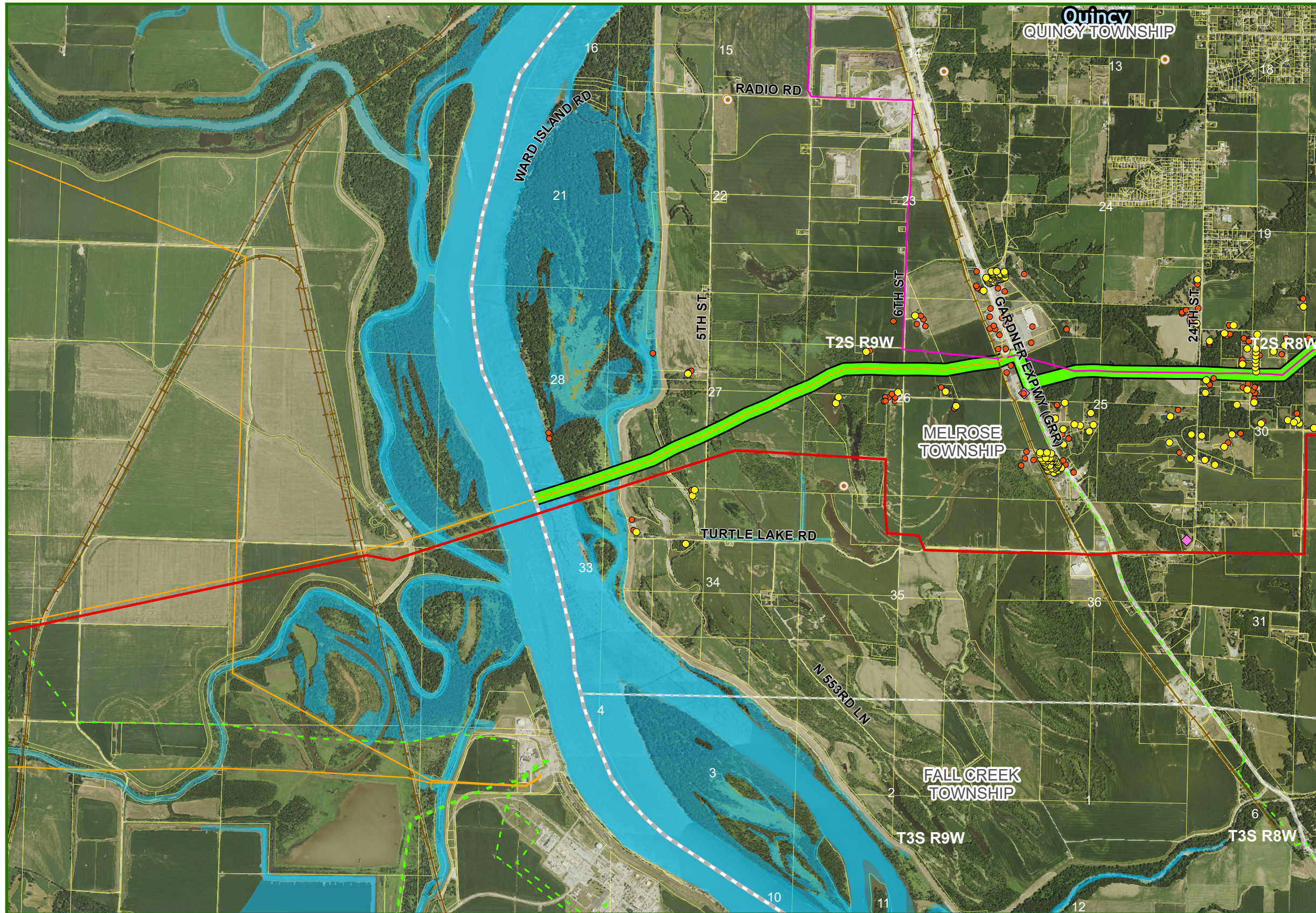


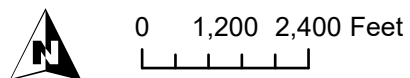
# CENTRAL ILLINOIS GRID TRANSFORMATION PROGRAM - ADAMS COUNTY TABLE MAP INDEX

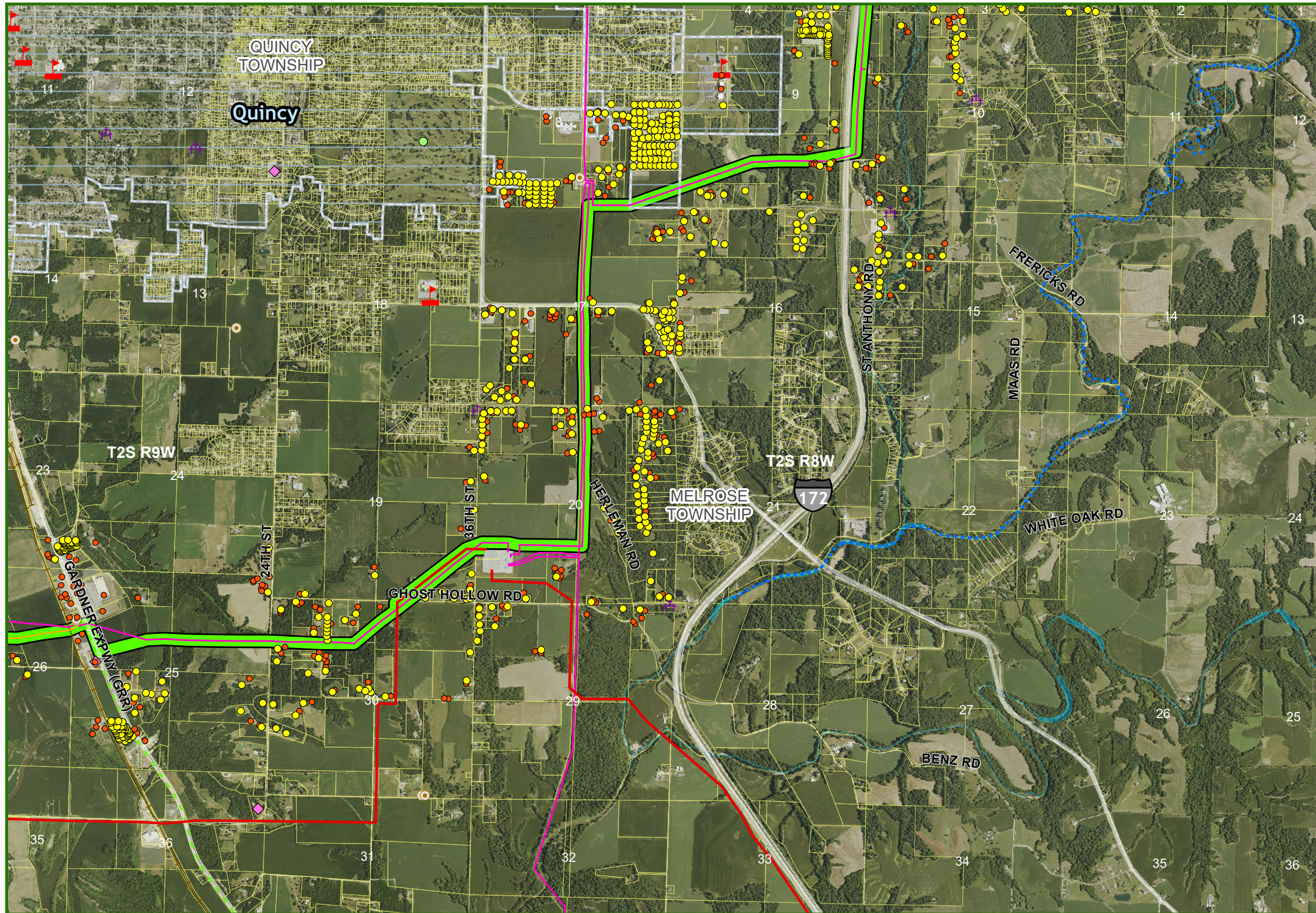


- |                 |              |                |             |
|-----------------|--------------|----------------|-------------|
| APPROVED ROUTE  | IL COUNTY    | EXISTING LINES | SUBSTATIONS |
| TABLE MAP SHEET | IL TOWNSHIP  | 138 KV         | AIRPORT     |
|                 | PLSS SECTION | 161 KV         |             |
|                 | IL CITY      | 345 KV         |             |
|                 | IL DNR LANDS |                |             |

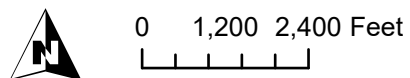


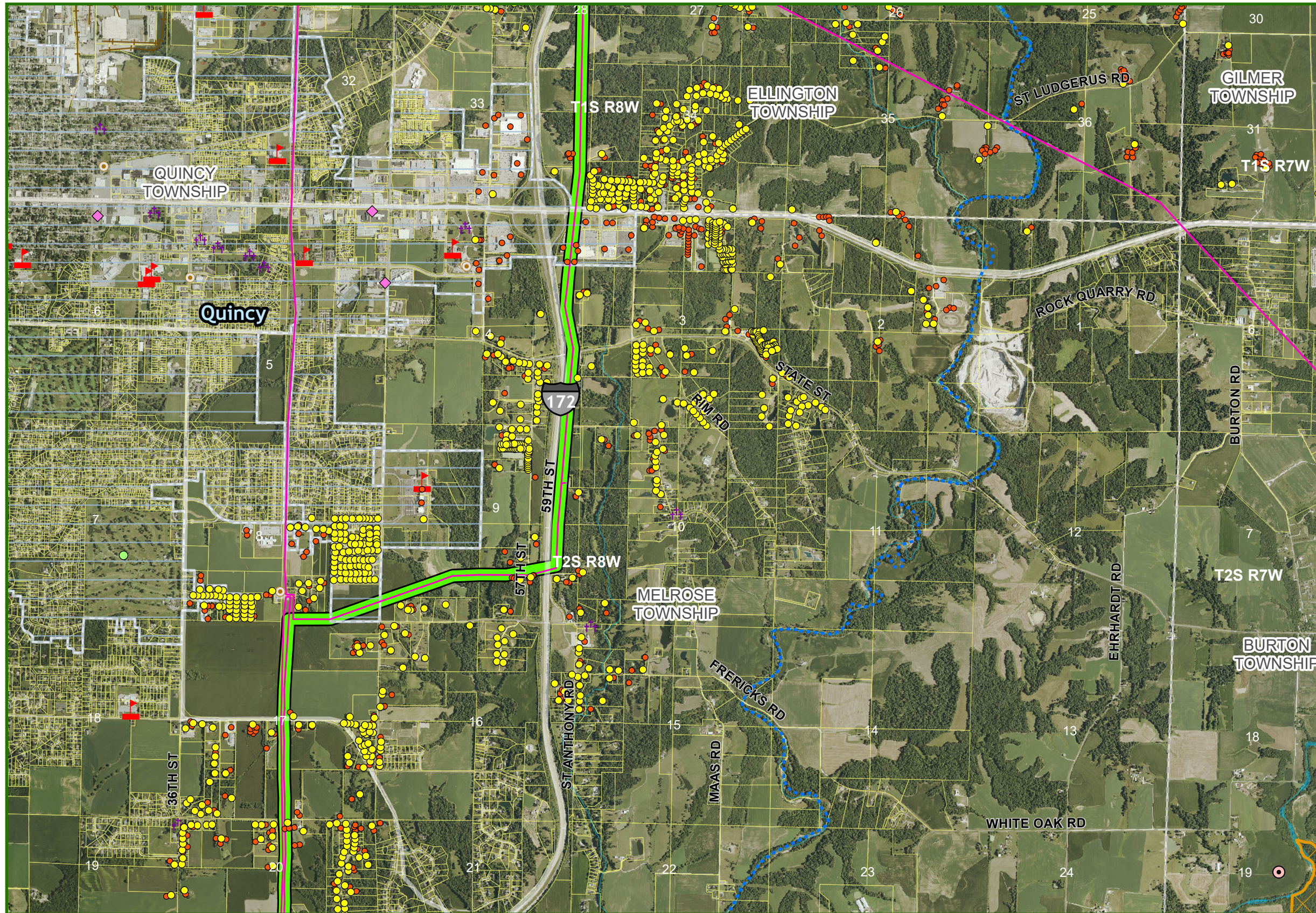
- APPROVED ROUTE
- SUBSTATIONS
- EXISTING LINES
- 69 KV
- 138 KV
- 161 KV
- 230 KV
- 345 KV
- COUNTY
- TOWNSHIP
- CITY
- PARCELS
- IL DNR LANDS
- RAILROAD
- WATERBODY
- IL BIOLOGICAL SIGNIFICANCE STREAM
- NON-RESIDENCE
- RESIDENCE
- SCHOOL OR COLLEGE
- HOSPITALS
- GOLF COURSE
- CEMETRY
- PLACE OF WORSHIP
- AIR NAVIGATION DEVICE
- AIRPORT
- COMMUNICATION TOWER



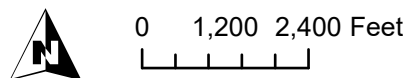


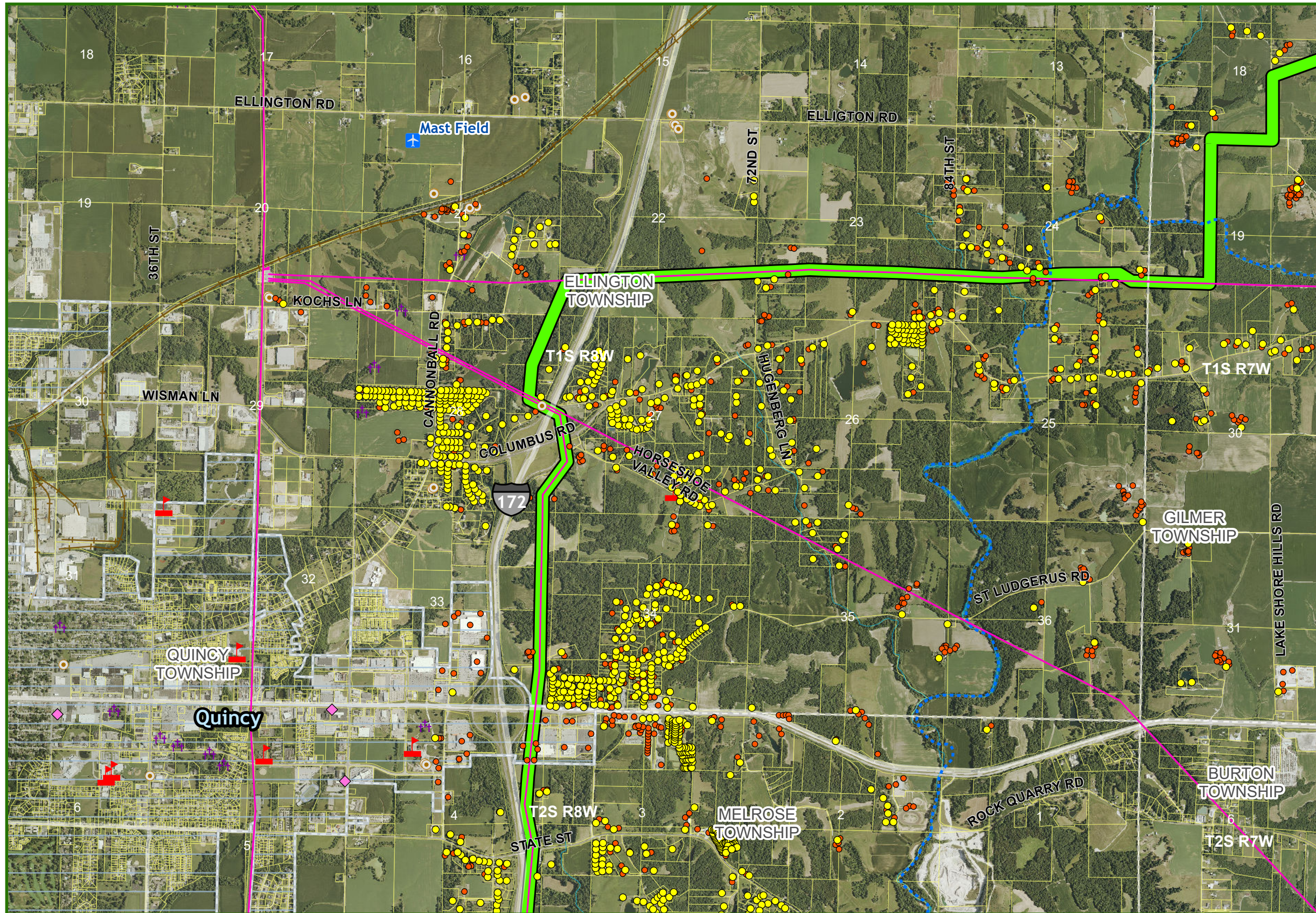
- █ APPROVED ROUTE
- SUBSTATIONS
- EXISTING LINES
- - - 69 KV
- 138 KV
- 161 KV
- 230 KV
- 345 KV
- COUNTY
- TOWNSHIP
- CITY
- PARCELS
- IL DNR LANDS
- RAILROAD
- WATERBODY
- IL BIOLOGICAL SIGNIFICANCE STREAM
- NON-RESIDENCE
- RESIDENCE
- ▴ SCHOOL OR COLLEGE
- H HOSPITALS
- GOLF COURSE
- ✝ CEMETRY
- ◆ PLACE OF WORSHIP
- ⊙ AIR NAVIGATION DEVICE
- ✈ AIRPORT
- ⊙ COMMUNICATION TOWER



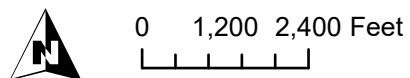


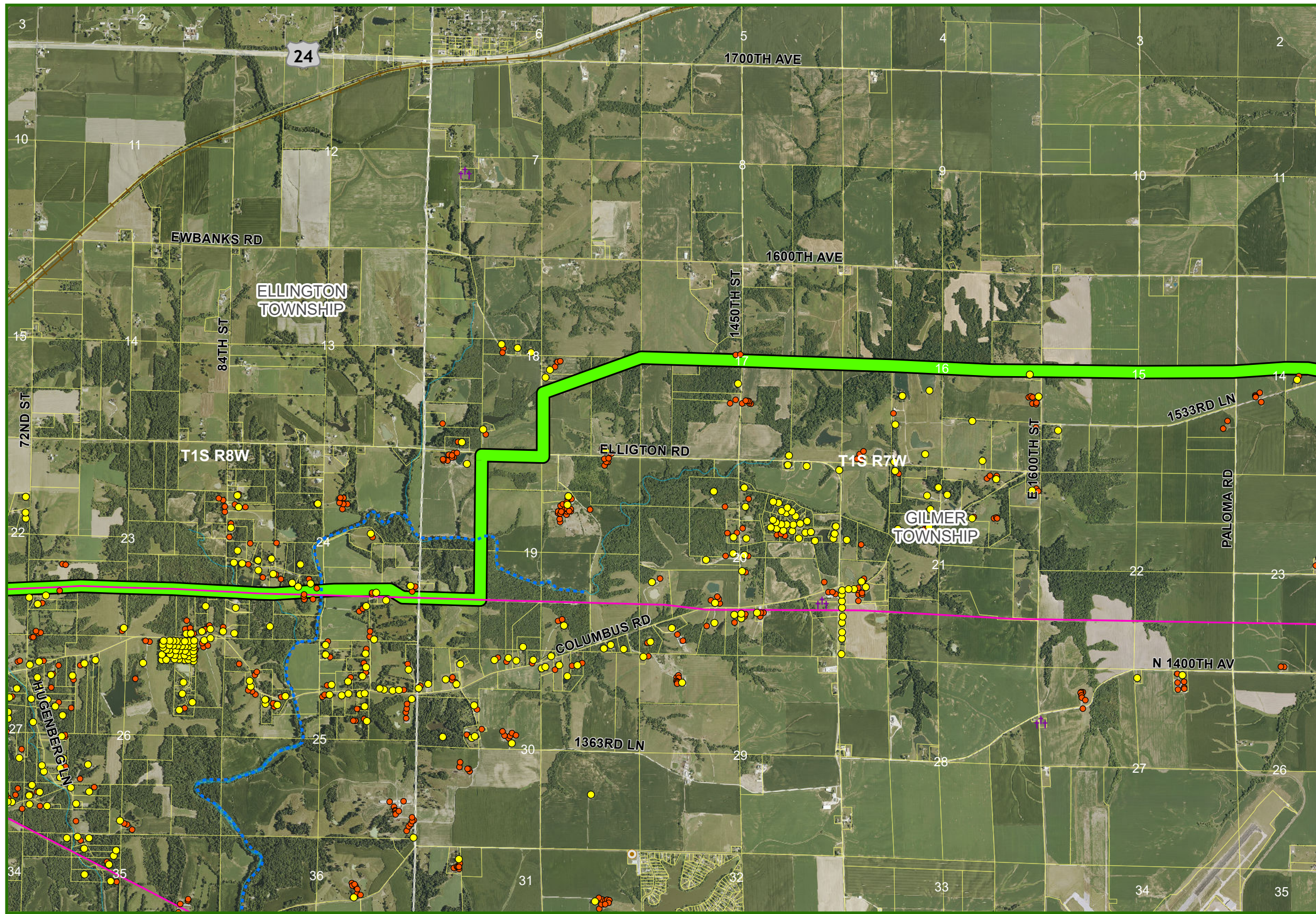
- █ APPROVED ROUTE
- SUBSTATIONS
- EXISTING LINES
  - - - 69 KV
  - 138 KV
  - 161 KV
  - 230 KV
  - 345 KV
- COUNTY
- TOWNSHIP
- CITY
- PARCELS
- IL DNR LANDS
- RAILROAD
- WATERBODY
- IL BIOLOGICAL SIGNIFICANCE STREAM
- NON-RESIDENCE
- RESIDENCE
- ▴ SCHOOL OR COLLEGE
- H HOSPITALS
- GOLF COURSE
- ✝ CEMETRY
- ◆ PLACE OF WORSHIP
- ⊙ AIR NAVIGATION DEVICE
- ✈ AIRPORT
- ⊙ COMMUNICATION TOWER



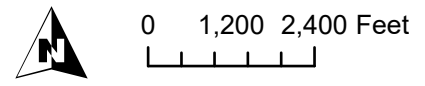


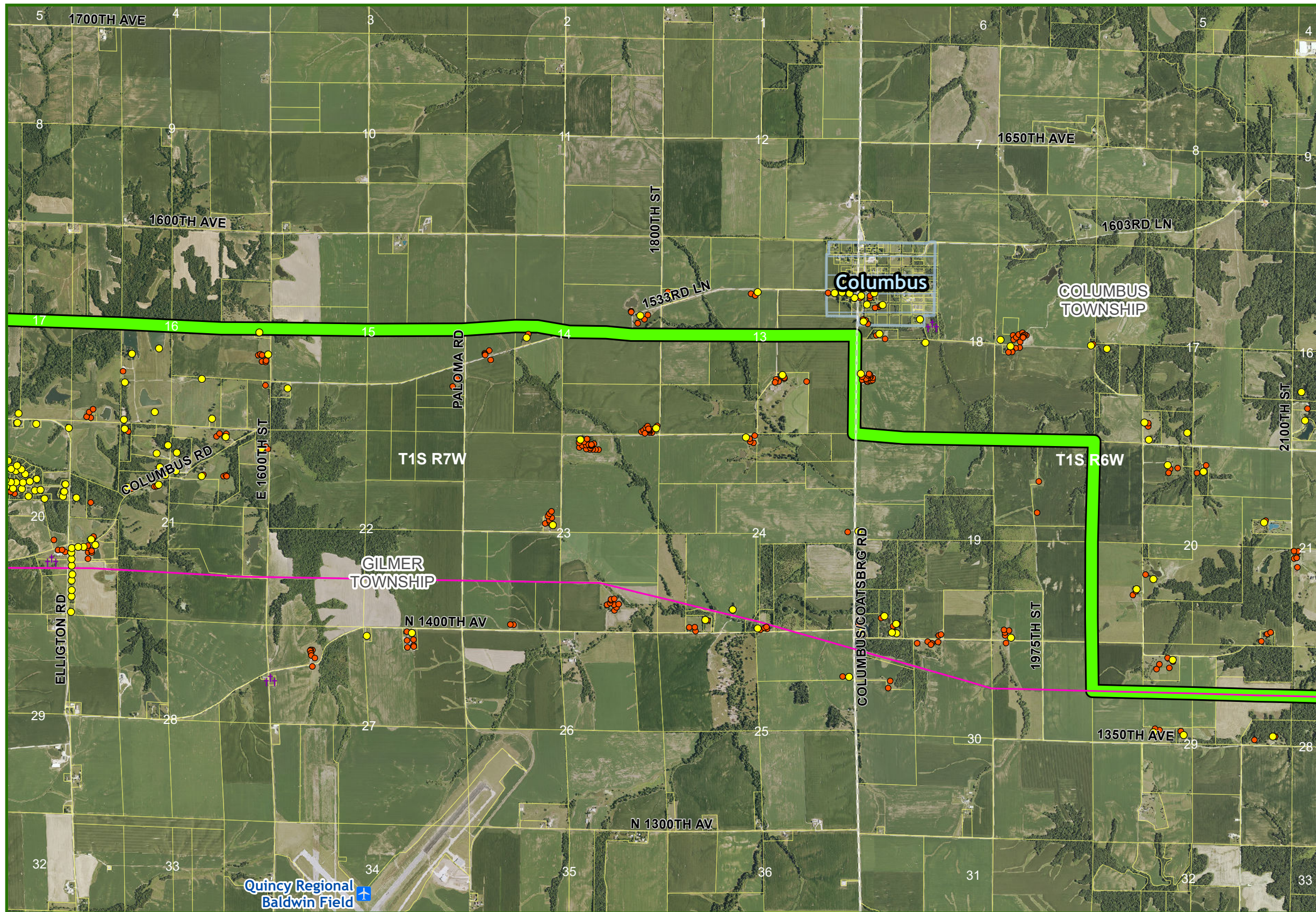
- █ APPROVED ROUTE
- SUBSTATIONS
- EXISTING LINES
- - - 69 KV
- 138 KV
- 161 KV
- 230 KV
- 345 KV
- COUNTY
- TOWNSHIP
- CITY
- PARCELS
- IL DNR LANDS
- RAILROAD
- WATERBODY
- - - IL BIOLOGICAL SIGNIFICANCE STREAM
- NON-RESIDENCE
- RESIDENCE
- ▴ SCHOOL OR COLLEGE
- H HOSPITALS
- GOLF COURSE
- ⛆ CEMETRY
- ◆ PLACE OF WORSHIP
- AIR NAVIGATION DEVICE
- ✈ AIRPORT
- COMMUNICATION TOWER



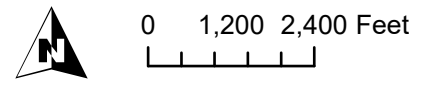


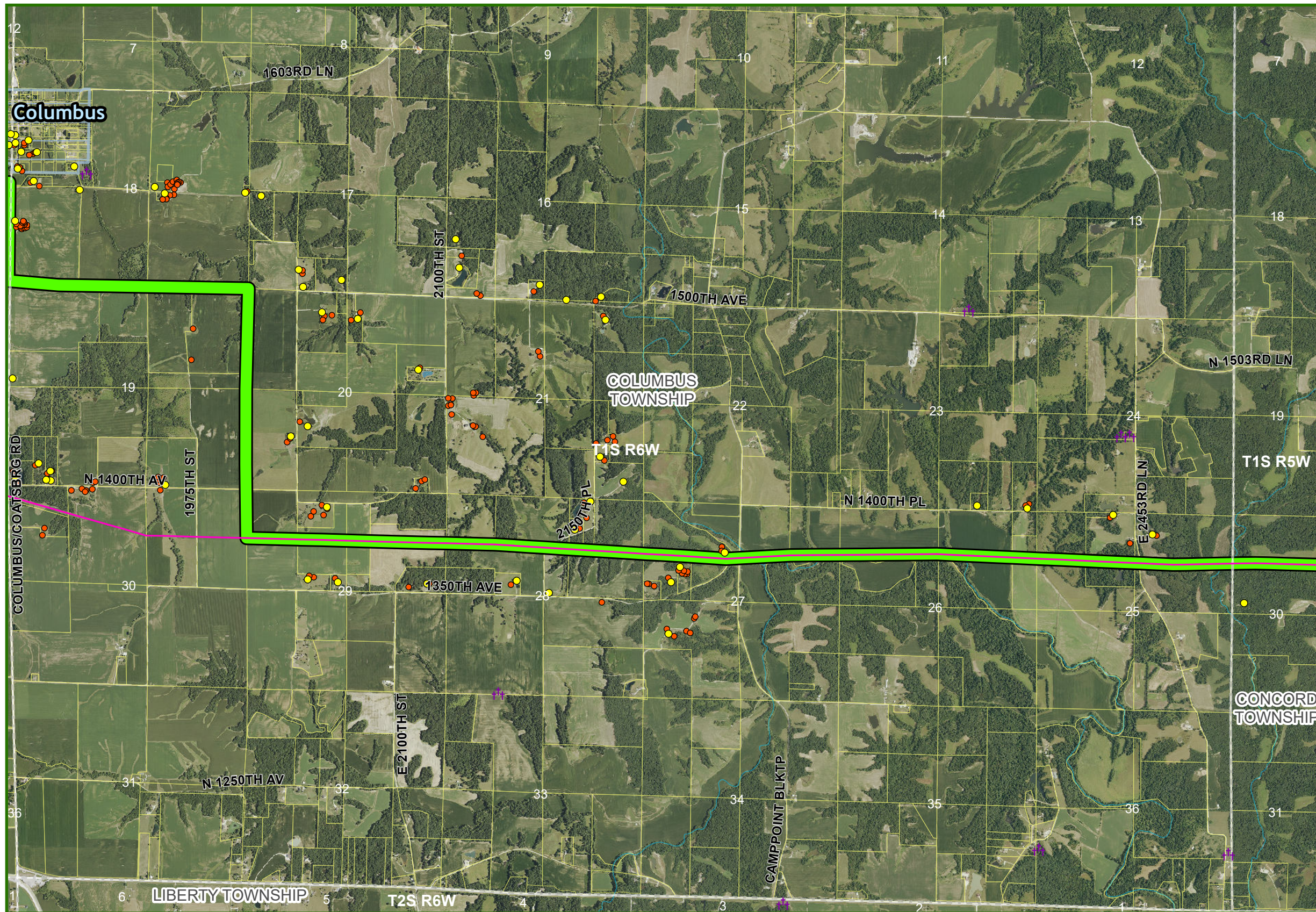
- █ APPROVED ROUTE
- SUBSTATIONS
- EXISTING LINES
  - 69 KV
  - 138 KV
  - 161 KV
  - 230 KV
  - 345 KV
- COUNTY
- TOWNSHIP
- CITY
- PARCELS
- IL DNR LANDS
- +— RAILROAD
- WATERBODY
- IL BIOLOGICAL SIGNIFICANCE STREAM
- NON-RESIDENCE
- RESIDENCE
- ▴ SCHOOL OR COLLEGE
- H HOSPITALS
- GOLF COURSE
- † CEMETRY
- ◇ PLACE OF WORSHIP
- ⊙ AIR NAVIGATION DEVICE
- ✈ AIRPORT
- ⊙ COMMUNICATION TOWER



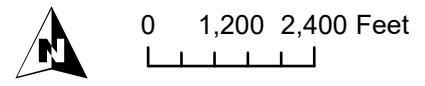


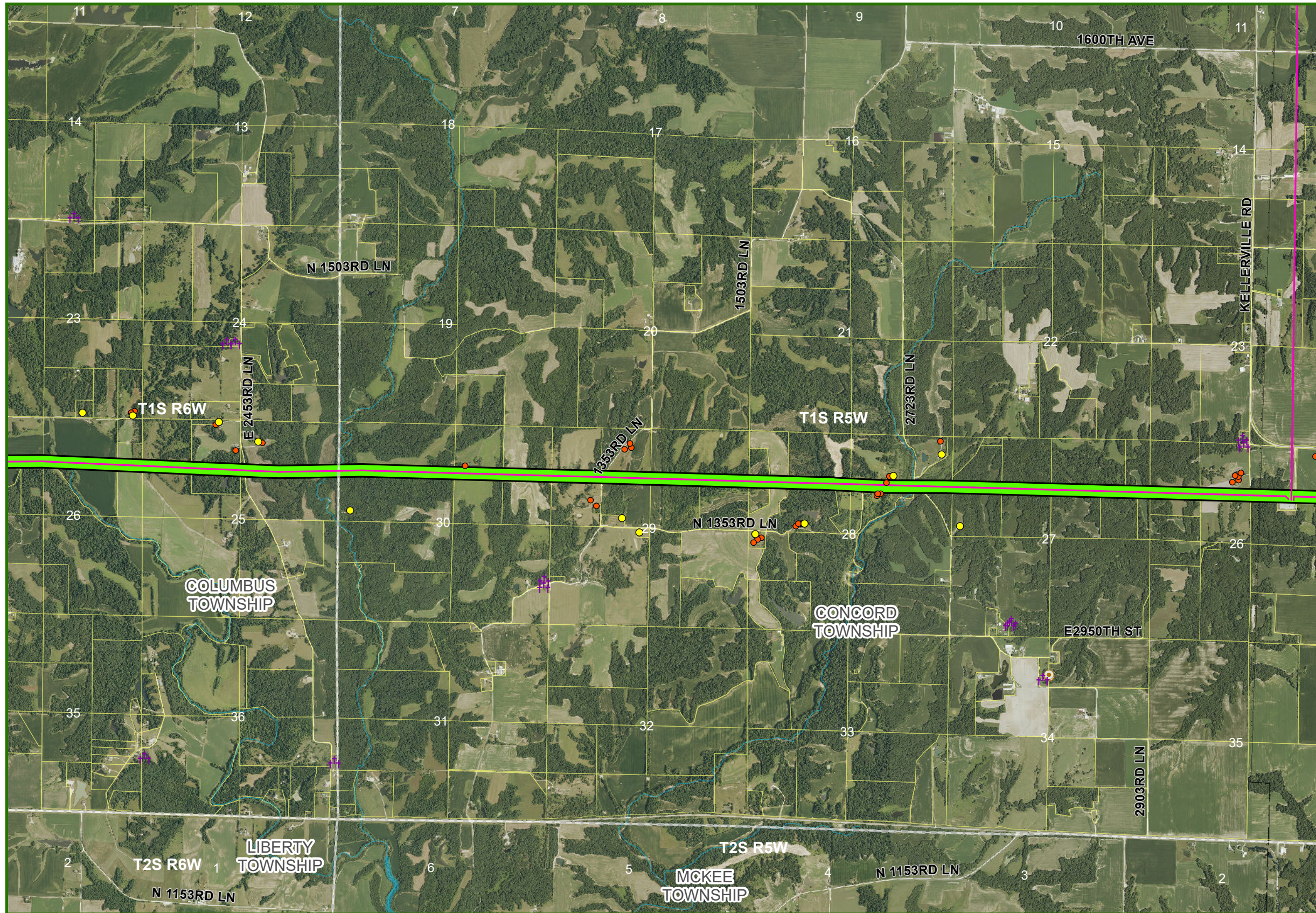
- █ APPROVED ROUTE
- SUBSTATIONS
- EXISTING LINES
  - - - 69 KV
  - 138 KV
  - 161 KV
  - 230 KV
  - 345 KV
- COUNTY
- TOWNSHIP
- CITY
- PARCELS
- IL DNR LANDS
- +— RAILROAD
- WATERBODY
- - - IL BIOLOGICAL SIGNIFICANCE STREAM
- NON-RESIDENCE
- RESIDENCE
- ▴ SCHOOL OR COLLEGE
- H HOSPITALS
- GOLF COURSE
- ✠ CEMETRY
- ◇ PLACE OF WORSHIP
- ⊙ AIR NAVIGATION DEVICE
- ✈ AIRPORT
- ⊙ COMMUNICATION TOWER



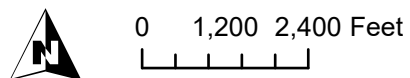


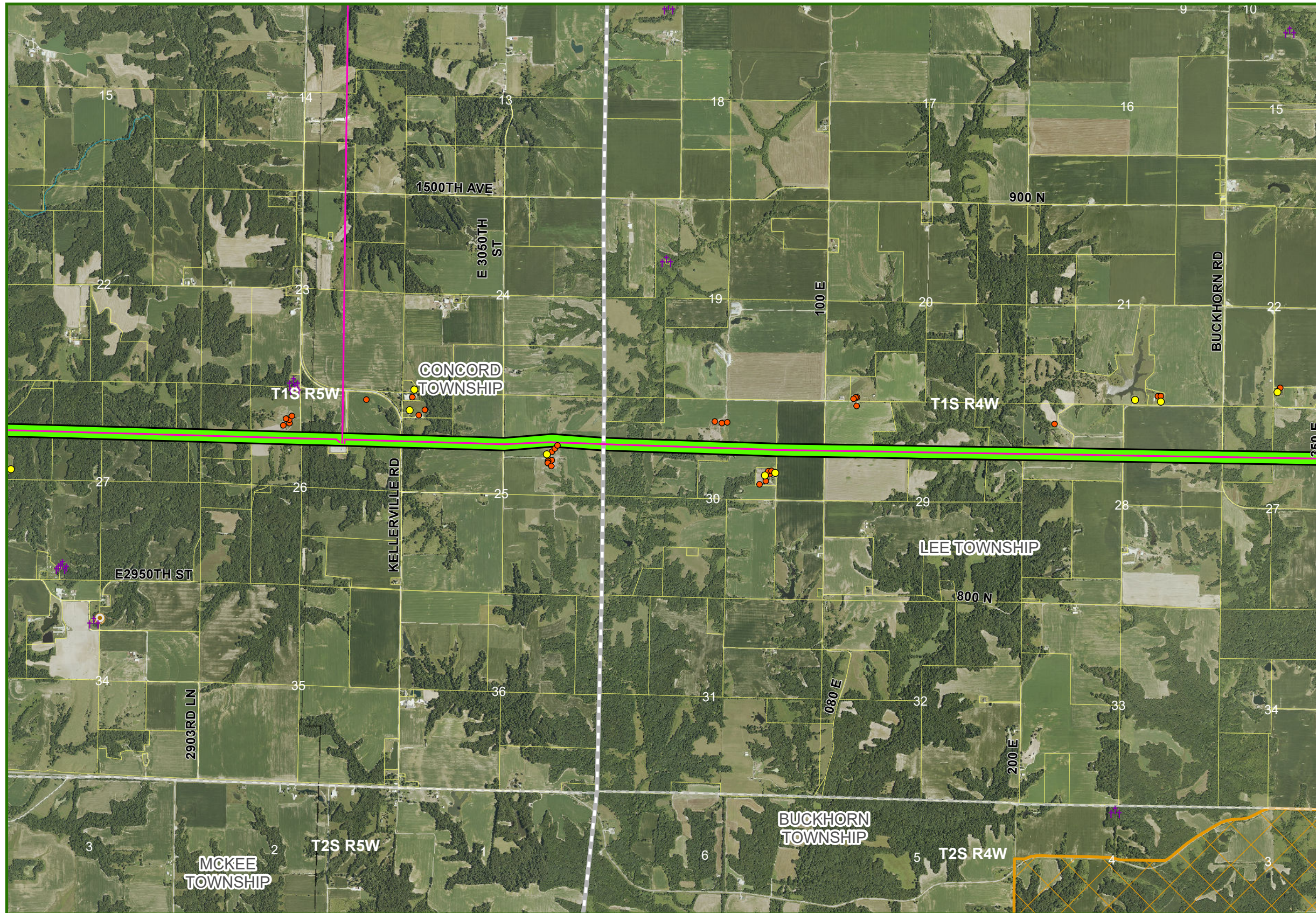
- █ APPROVED ROUTE
- SUBSTATIONS
- EXISTING LINES
  - 69 KV
  - 138 KV
  - 161 KV
  - 230 KV
  - 345 KV
- COUNTY
- TOWNSHIP
- CITY
- PARCELS
- IL DNR LANDS
- RAILROAD
- WATERBODY
- IL BIOLOGICAL SIGNIFICANCE STREAM
- NON-RESIDENCE
- RESIDENCE
- SCHOOL OR COLLEGE
- HOSPITALS
- GOLF COURSE
- CEMETRY
- PLACE OF WORSHIP
- AIR NAVIGATION DEVICE
- AIRPORT
- COMMUNICATION TOWER





- APPROVED ROUTE
- SUBSTATIONS
- EXISTING LINES
- 69 KV
- 138 KV
- 161 KV
- 230 KV
- 345 KV
- COUNTY
- TOWNSHIP
- CITY
- PARCELS
- IL DNR LANDS
- RAILROAD
- WATERBODY
- IL BIOLOGICAL SIGNIFICANCE STREAM
- NON-RESIDENCE
- RESIDENCE
- SCHOOL OR COLLEGE
- HOSPITALS
- GOLF COURSE
- CEMETRY
- PLACE OF WORSHIP
- AIR NAVIGATION DEVICE
- AIRPORT
- COMMUNICATION TOWER





- APPROVED ROUTE
- SUBSTATIONS
- EXISTING LINES
- 69 KV
- 138 KV
- 161 KV
- 230 KV
- 345 KV
- COUNTY
- TOWNSHIP
- CITY
- PARCELS
- IL DNR LANDS
- RAILROAD
- WATERBODY
- IL BIOLOGICAL SIGNIFICANCE STREAM
- NON-RESIDENCE
- RESIDENCE
- SCHOOL OR COLLEGE
- HOSPITALS
- GOLF COURSE
- CEMETRY
- PLACE OF WORSHIP
- AIR NAVIGATION DEVICE
- AIRPORT
- COMMUNICATION TOWER

