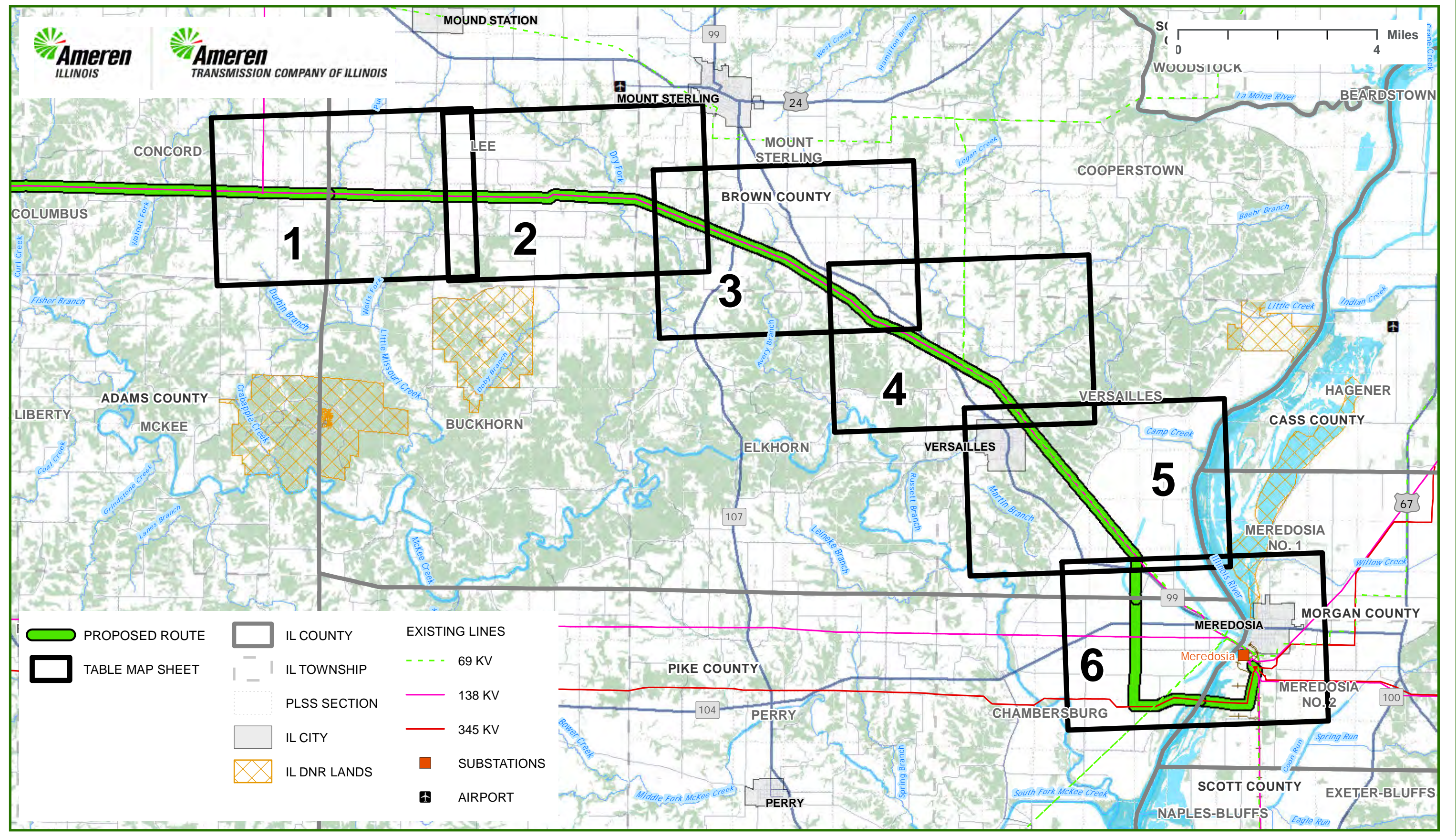
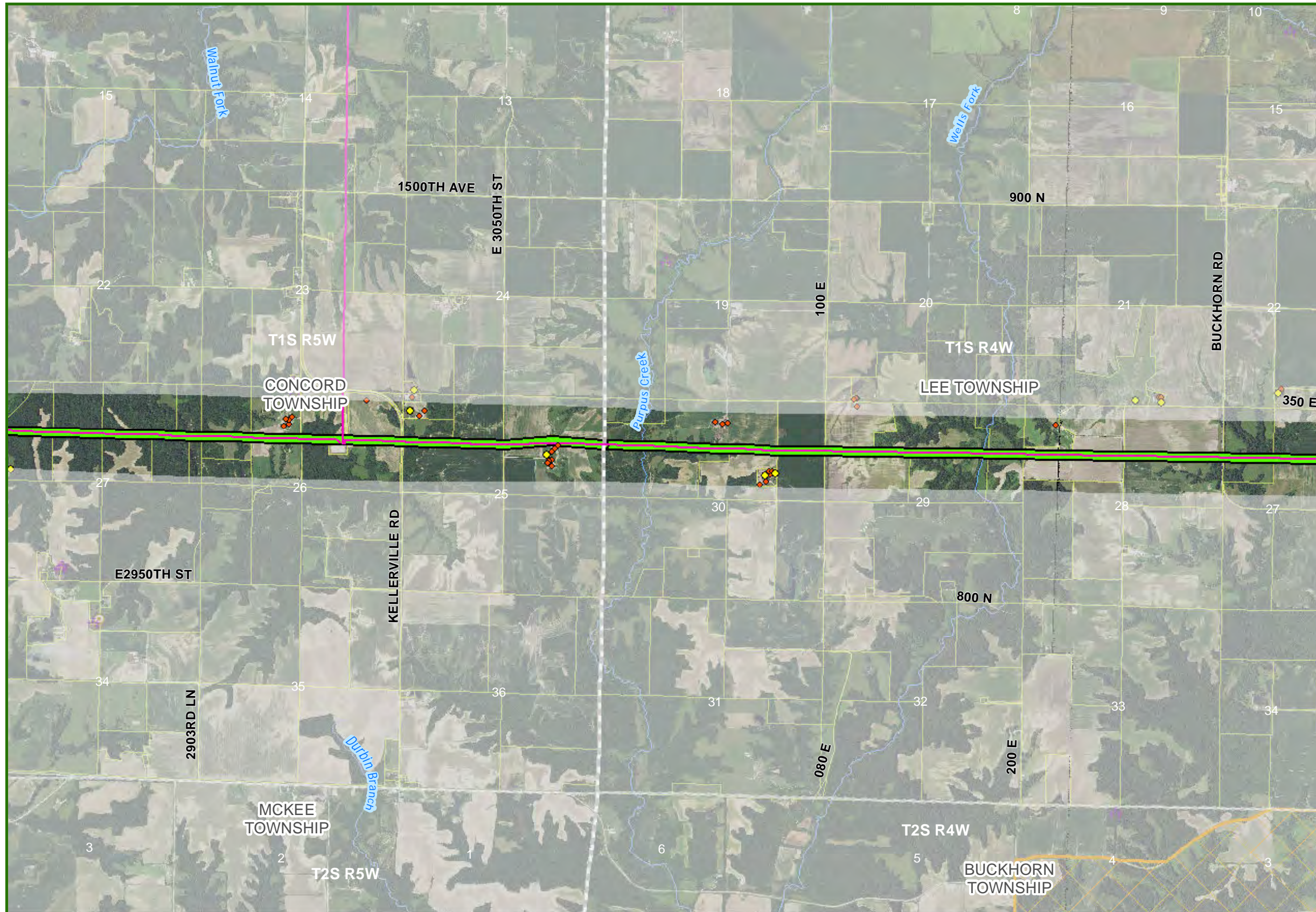
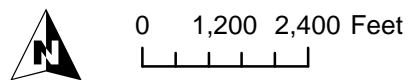


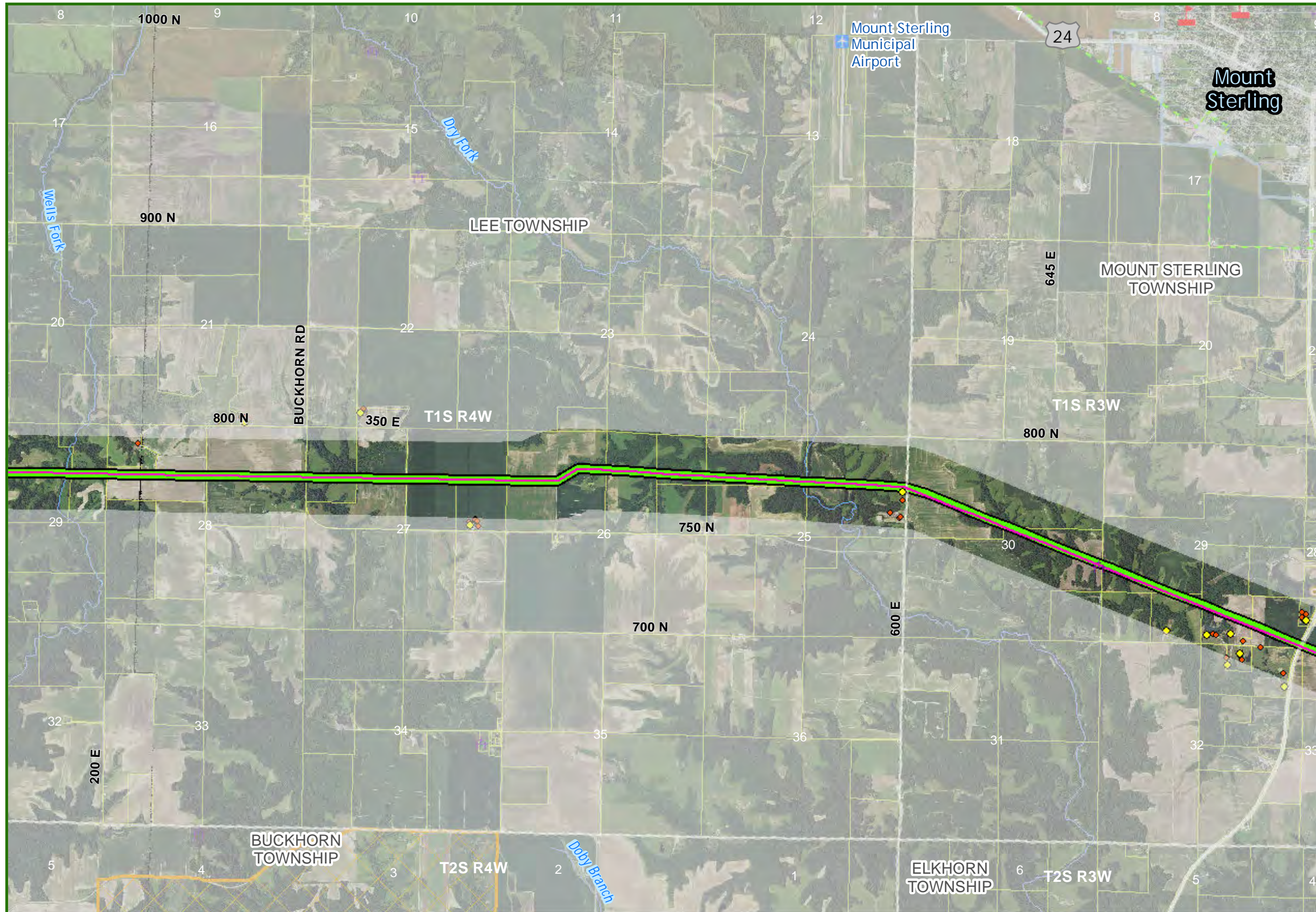
# CENTRAL ILLINOIS GRID TRANSFORMATION PROGRAM - BROWN, PIKE, MORGAN COUNTIES TABLE MAP INDEX



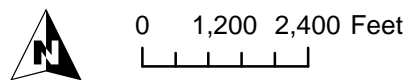


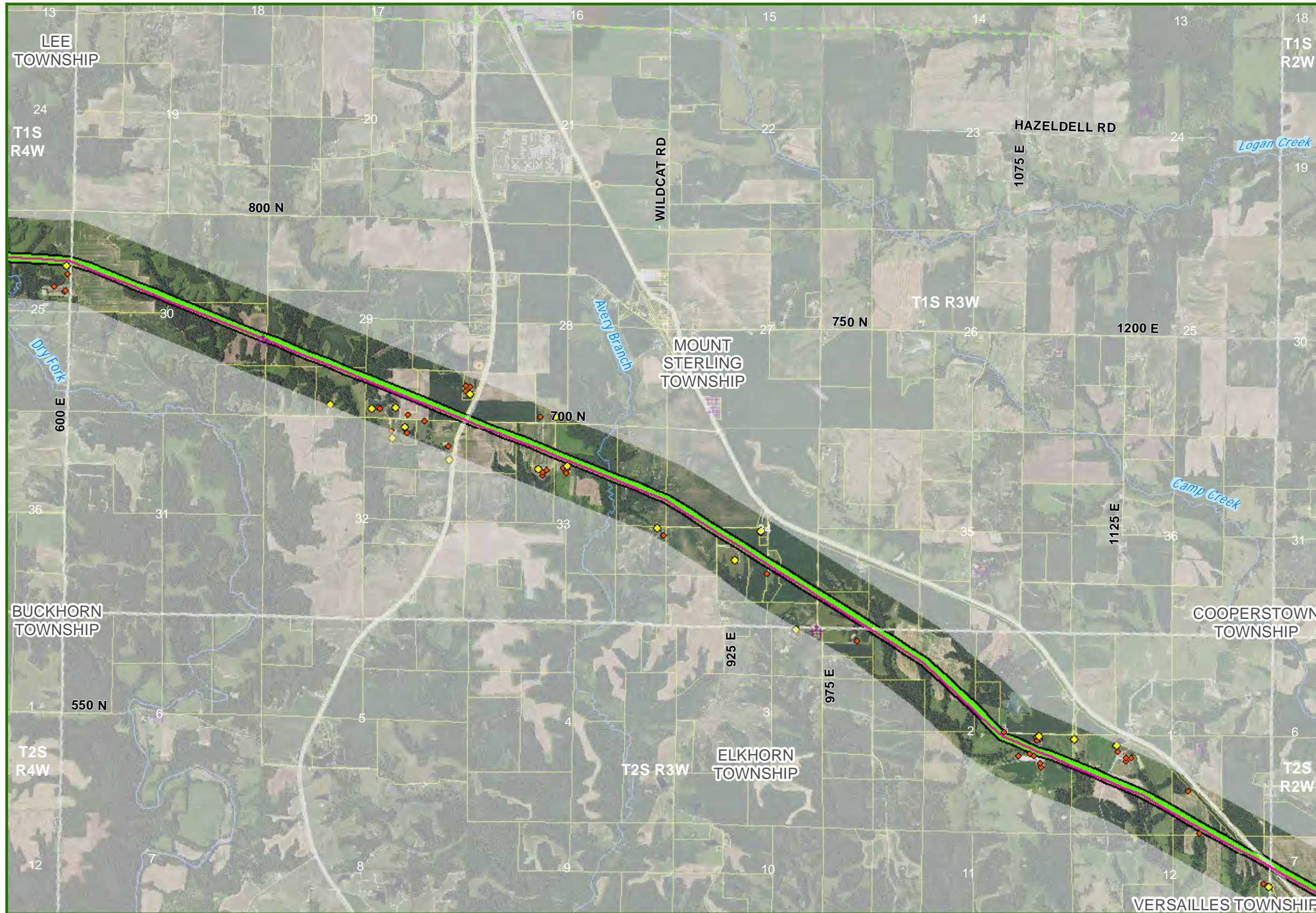
- PROPOSED ROUTE
- AREA EXCLUDED FOR ROUTING
- SUBSTATIONS
- EXISTING LINES**
- 69 KV
- 138 KV
- 161 KV
- 230 KV
- 345 KV
- COUNTY
- TOWNSHIP
- CITY
- PARCELS
- IL DNR LANDS
- RAILROAD
- WATERBODY
- IL\_Wetlands
- IL BIOLOGICAL SIGNIFICANCE STREAM
- NON-RESIDENCE
- RESIDENCE
- SCHOOL OR COLLEGE
- HOSPITALS
- GOLF COURSE
- CEMETRY
- PLACE OF WORSHIP
- AIR NAVIGATION DEVICE
- AIRPORT
- COMMUNICATION TOWER



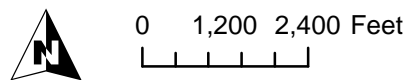


- PROPOSED ROUTE
- AREA EXCLUDED FOR ROUTING
- SUBSTATIONS
- EXISTING LINES
  - 69 KV
  - 138 KV
  - 161 KV
  - 230 KV
  - 345 KV
- COUNTY
- TOWNSHIP
- CITY
- PARCELS
- IL DNR LANDS
- RAILROAD
- WATERBODY
- IL BIOLOGICAL SIGNIFICANCE STREAM
- NON-RESIDENCE
- RESIDENCE
- SCHOOL OR COLLEGE
- HOSPITALS
- GOLF COURSE
- CEMETRY
- PLACE OF WORSHIP
- AIR NAVIGATION DEVICE
- AIRPORT
- COMMUNICATION TOWER



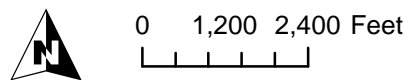


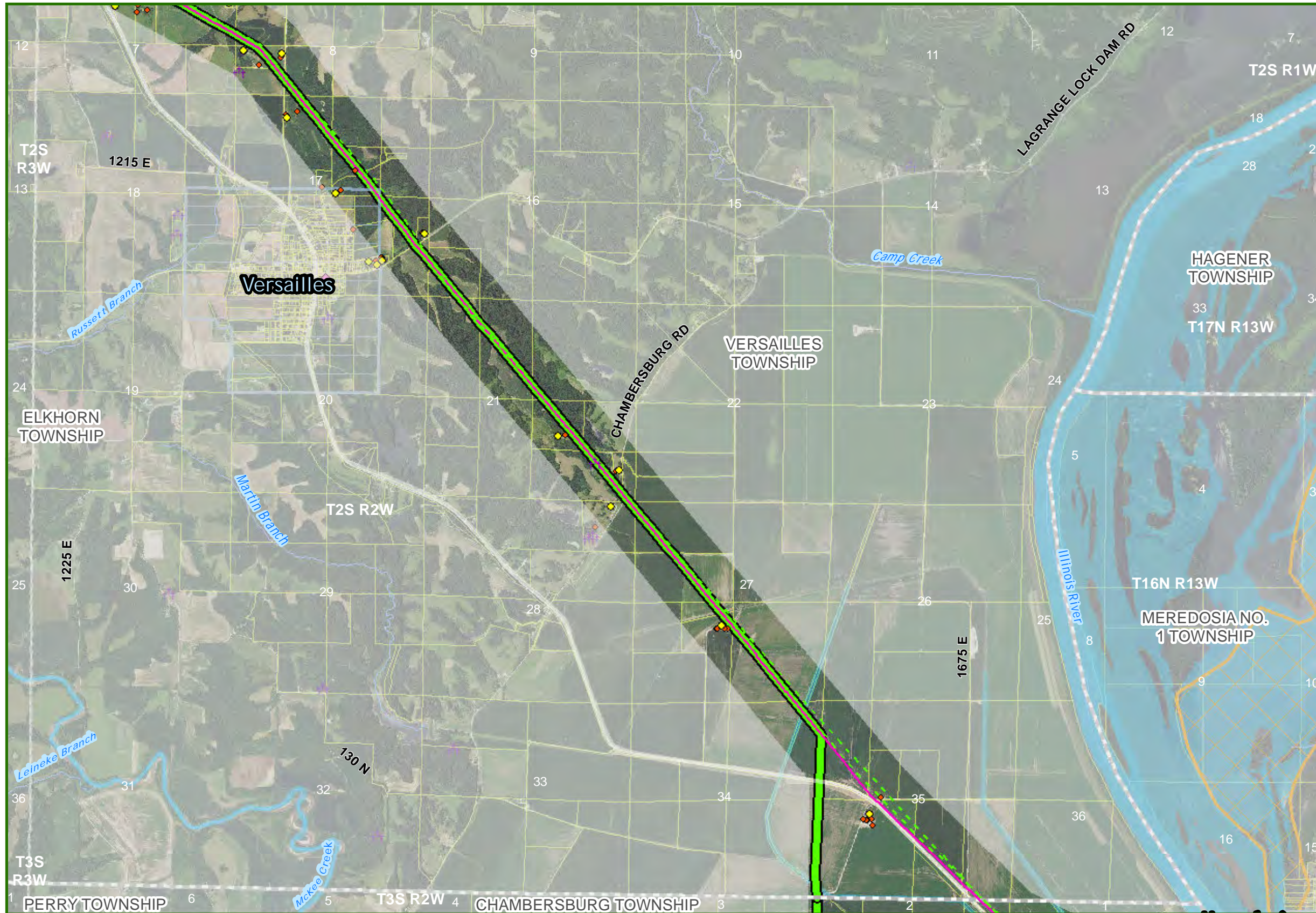
- PROPOSED ROUTE
- AREA EXCLUDED FOR ROUTING
- SUBSTATIONS
- EXISTING LINES
  - 69 KV
  - 138 KV
  - 161 KV
  - 230 KV
  - 345 KV
- COUNTY
- TOWNSHIP
- CITY
- PARCELS
- IL DNR LANDS
- RAILROAD
- WATERBODY
- IL BIOLOGICAL SIGNIFICANCE STREAM
- NON-RESIDENCE
- RESIDENCE
- SCHOOL OR COLLEGE
- HOSPITALS
- GOLF COURSE
- CEMETRY
- PLACE OF WORSHIP
- AIR NAVIGATION DEVICE
- AIRPORT
- COMMUNICATION TOWER



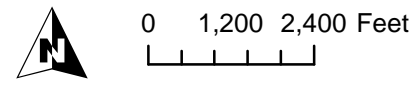


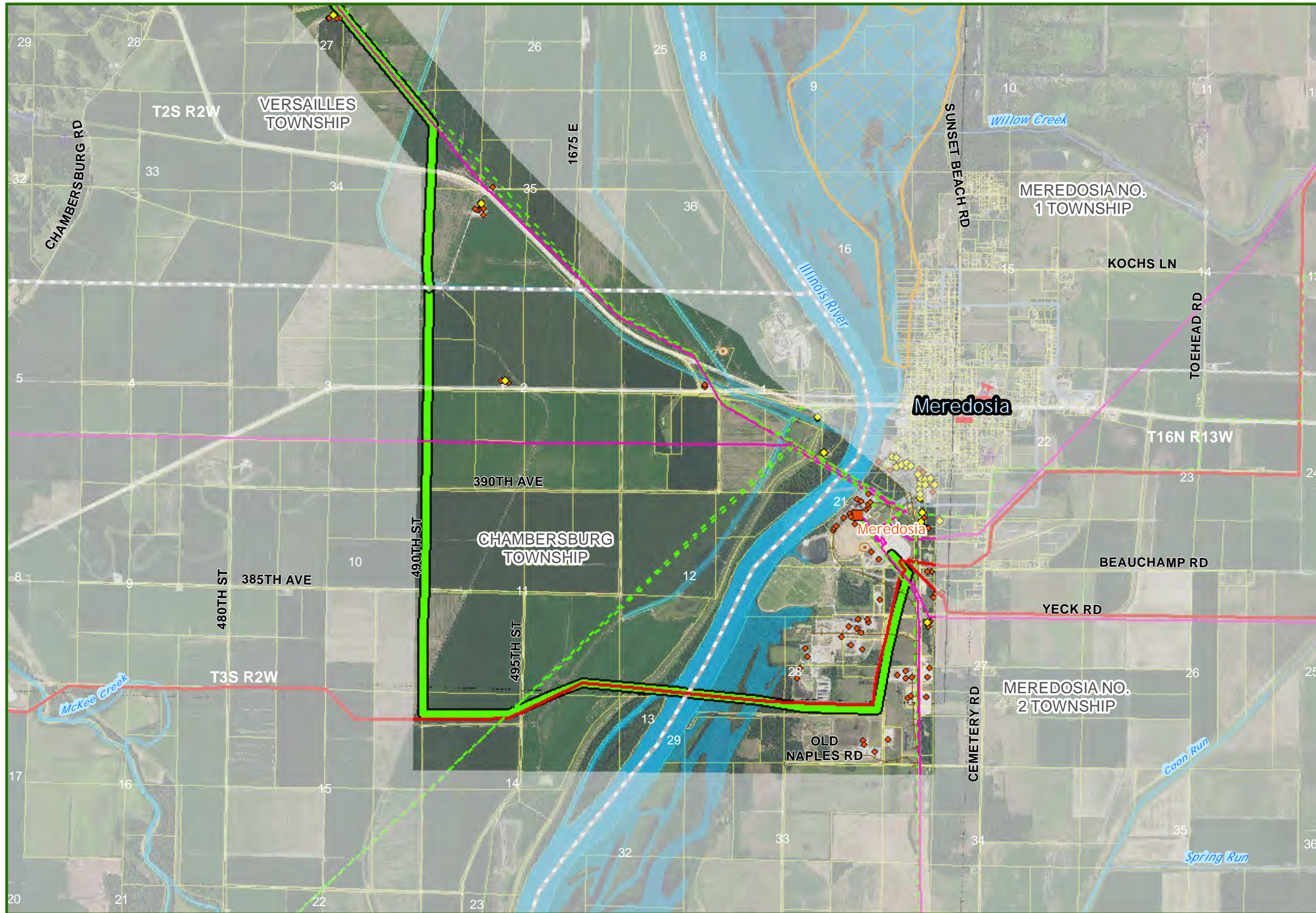
- PROPOSED ROUTE
- AREA EXCLUDED FOR ROUTING
- SUBSTATIONS
- EXISTING LINES
  - 69 KV
  - 138 KV
  - 161 KV
  - 230 KV
  - 345 KV
- COUNTY
- TOWNSHIP
- CITY
- PARCELS
- IL DNR LANDS
- RAILROAD
- WATERBODY
- IL\_Wetlands
- IL BIOLOGICAL SIGNIFICANCE STREAM
- NON-RESIDENCE
- RESIDENCE
- SCHOOL OR COLLEGE
- HOSPITALS
- GOLF COURSE
- CEMETRY
- PLACE OF WORSHIP
- AIR NAVIGATION DEVICE
- AIRPORT
- COMMUNICATION TOWER





- PROPOSED ROUTE
- AREA EXCLUDED FOR ROUTING
- SUBSTATIONS
- EXISTING LINES
  - 69 KV
  - 138 KV
  - 161 KV
  - 230 KV
  - 345 KV
- COUNTY
- TOWNSHIP
- CITY
- PARCELS
- IL DNR LANDS
- RAILROAD
- WATERBODY
- IL\_Wetlands
- IL BIOLOGICAL SIGNIFICANCE STREAM
- NON-RESIDENCE
- RESIDENCE
- SCHOOL OR COLLEGE
- HOSPITALS
- GOLF COURSE
- CEMETRY
- PLACE OF WORSHIP
- AIR NAVIGATION DEVICE
- AIRPORT
- COMMUNICATION TOWER





- █ PROPOSED ROUTE
- AREA EXCLUDED FOR ROUTING
- SUBSTATIONS
- EXISTING LINES
  - - - 69 KV
  - - - 138 KV
  - - - 161 KV
  - - - 230 KV
  - - - 345 KV
- COUNTY
- TOWNSHIP
- CITY
- PARCELS
- IL DNR LANDS
- + RAILROAD
- WATERBODY
- IL\_Wetlands
- - - IL BIOLOGICAL SIGNIFICANCE STREAM
- NON-RESIDENCE
- RESIDENCE
- ▴ SCHOOL OR COLLEGE
- H HOSPITALS
- GOLF COURSE
- ✝ CEMETRY
- ◆ PLACE OF WORSHIP
- ⊙ AIR NAVIGATION DEVICE
- ✈ AIRPORT
- ⊙ COMMUNICATION TOWER

