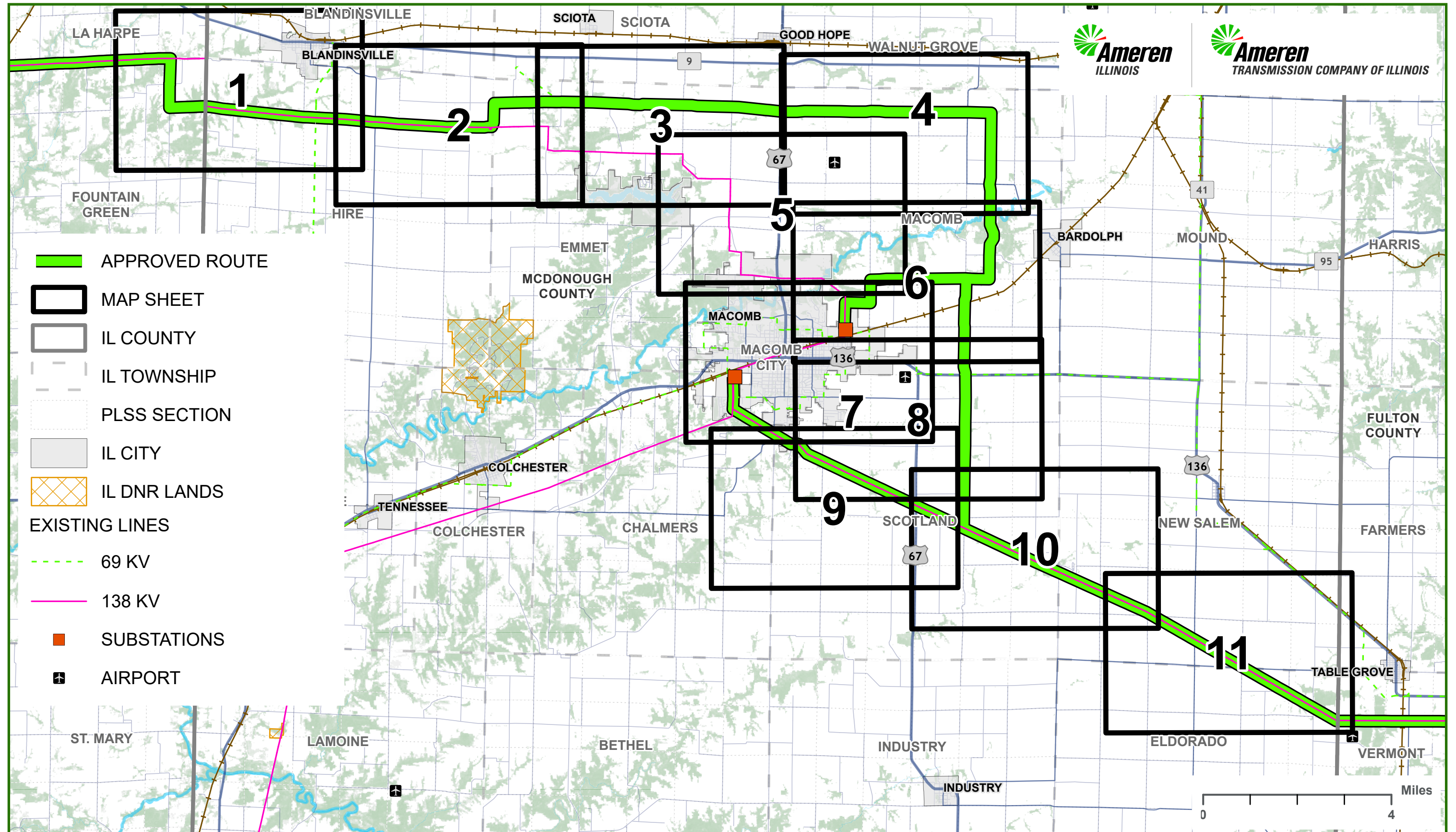
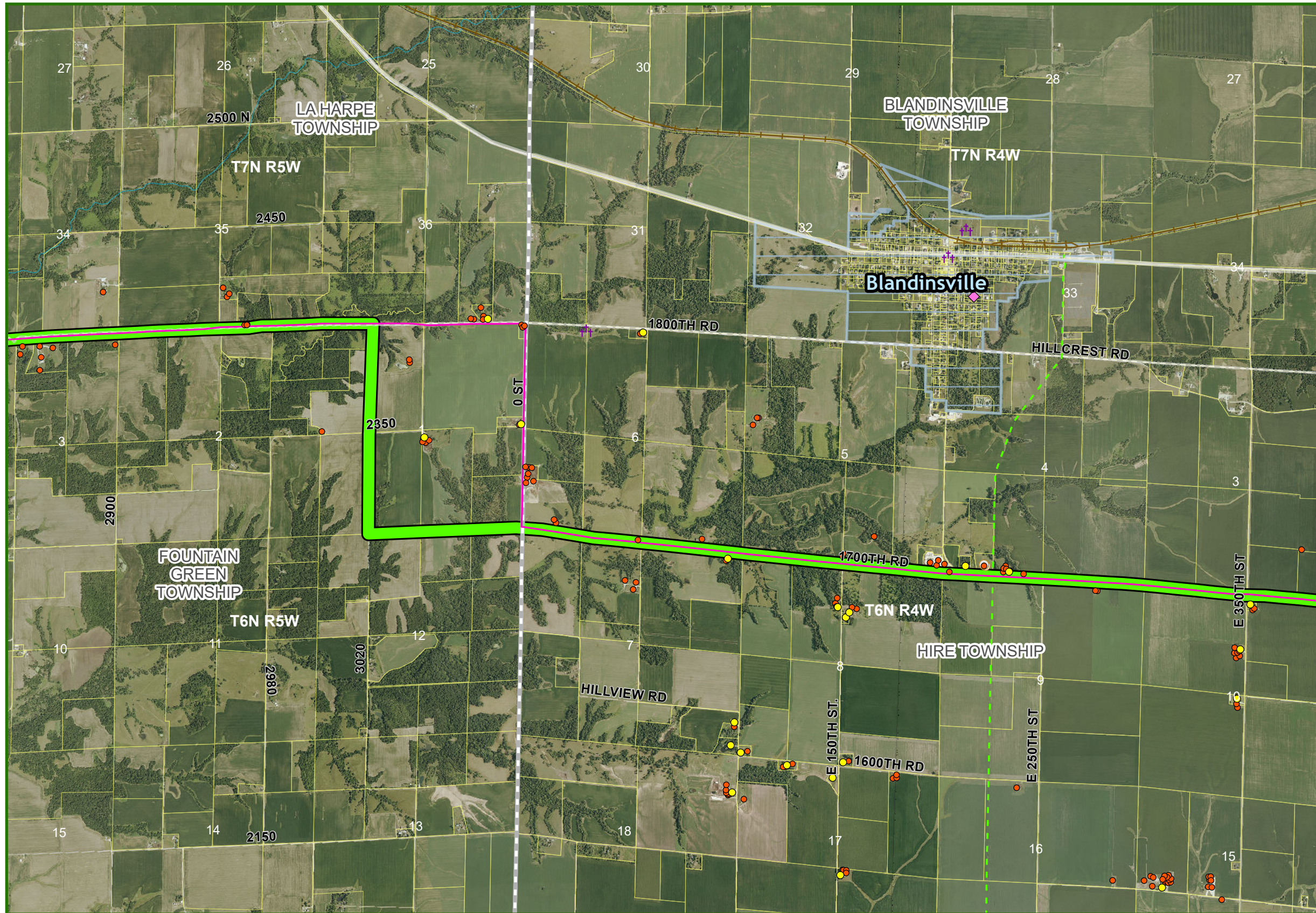


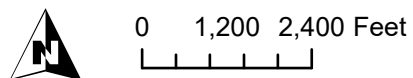
CENTRAL ILLINOIS GRID TRANSFORMATION PROGRAM - MCDONOUGH COUNTY MAP INDEX

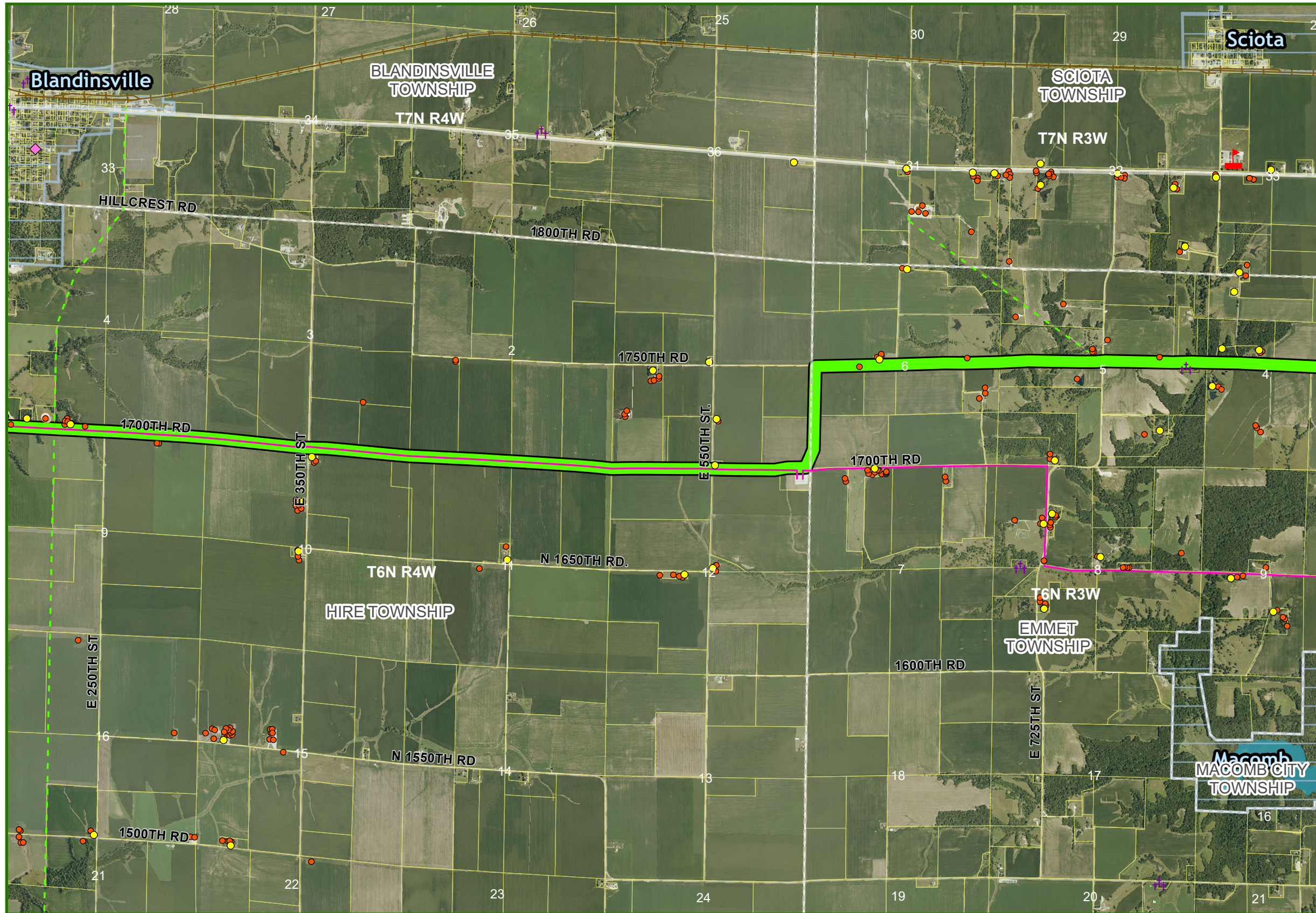


- APPROVED ROUTE
- MAP SHEET
- IL COUNTY
- IL TOWNSHIP
- PLSS SECTION
- IL CITY
- IL DNR LANDS
- EXISTING LINES
- 69 KV
- 138 KV
- SUBSTATIONS
- AIRPORT

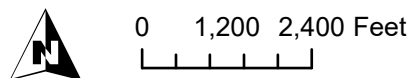


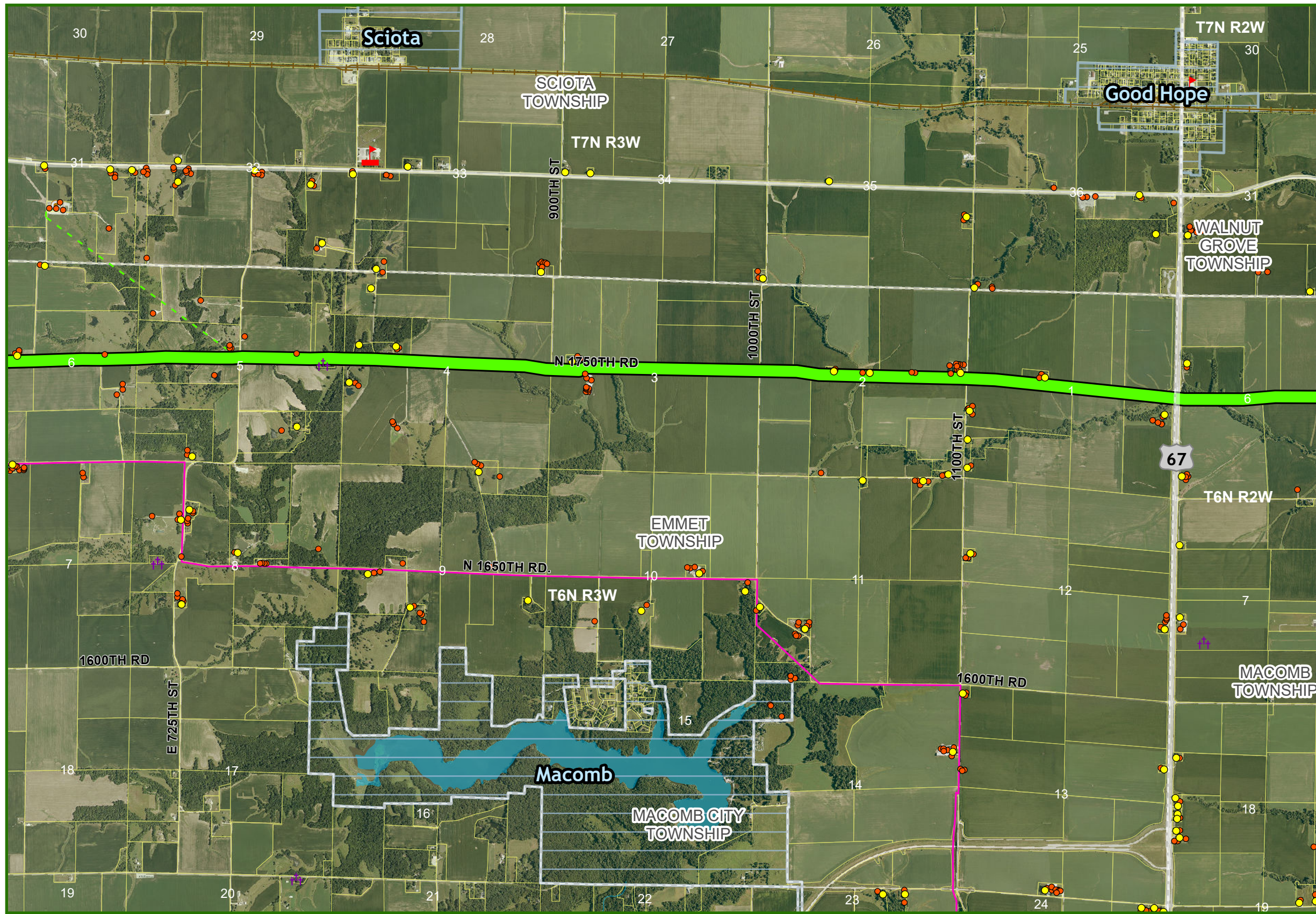
- █ APPROVED ROUTE
- SUBSTATIONS
- EXISTING LINES
 - - - 69 KV
 - - - 138 KV
 - - - 161 KV
 - - - 230 KV
 - - - 345 KV
- COUNTY
- TOWNSHIP
- CITY
- PARCELS
- IL DNR LANDS
- - - RAILROAD
- WATERBODY
- - - IL BIOLOGICAL SIGNIFICANCE STREAM
- NON-RESIDENCE
- RESIDENCE
- ▴ SCHOOL OR COLLEGE
- H HOSPITALS
- GOLF COURSE
- ✠ CEMETRY
- ◇ PLACE OF WORSHIP
- ⊙ AIR NAVIGATION DEVICE
- ✈ AIRPORT
- ⊙ COMMUNICATION TOWER



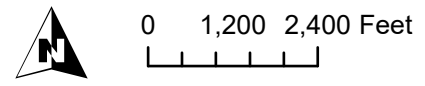


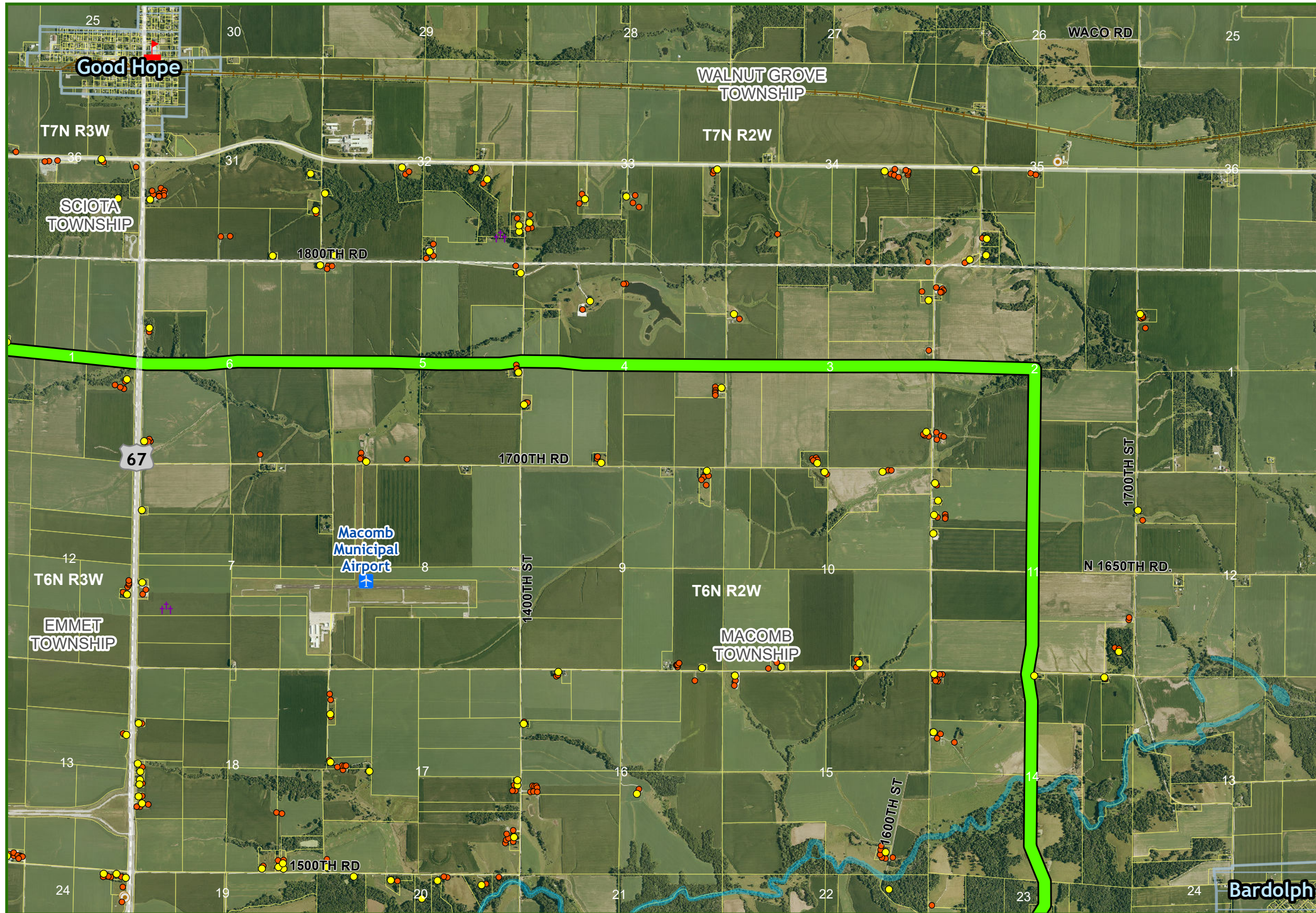
- █ APPROVED ROUTE
- SUBSTATIONS
- EXISTING LINES
 - - - 69 KV
 - 138 KV
 - 161 KV
 - 230 KV
 - 345 KV
- COUNTY
- TOWNSHIP
- CITY
- PARCELS
- IL DNR LANDS
- RAILROAD
- WATERBODY
- IL BIOLOGICAL SIGNIFICANCE STREAM
- NON-RESIDENCE
- RESIDENCE
- SCHOOL OR COLLEGE
- HOSPITALS
- GOLF COURSE
- CEMETRY
- PLACE OF WORSHIP
- AIR NAVIGATION DEVICE
- AIRPORT
- COMMUNICATION TOWER



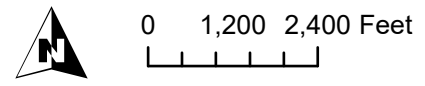


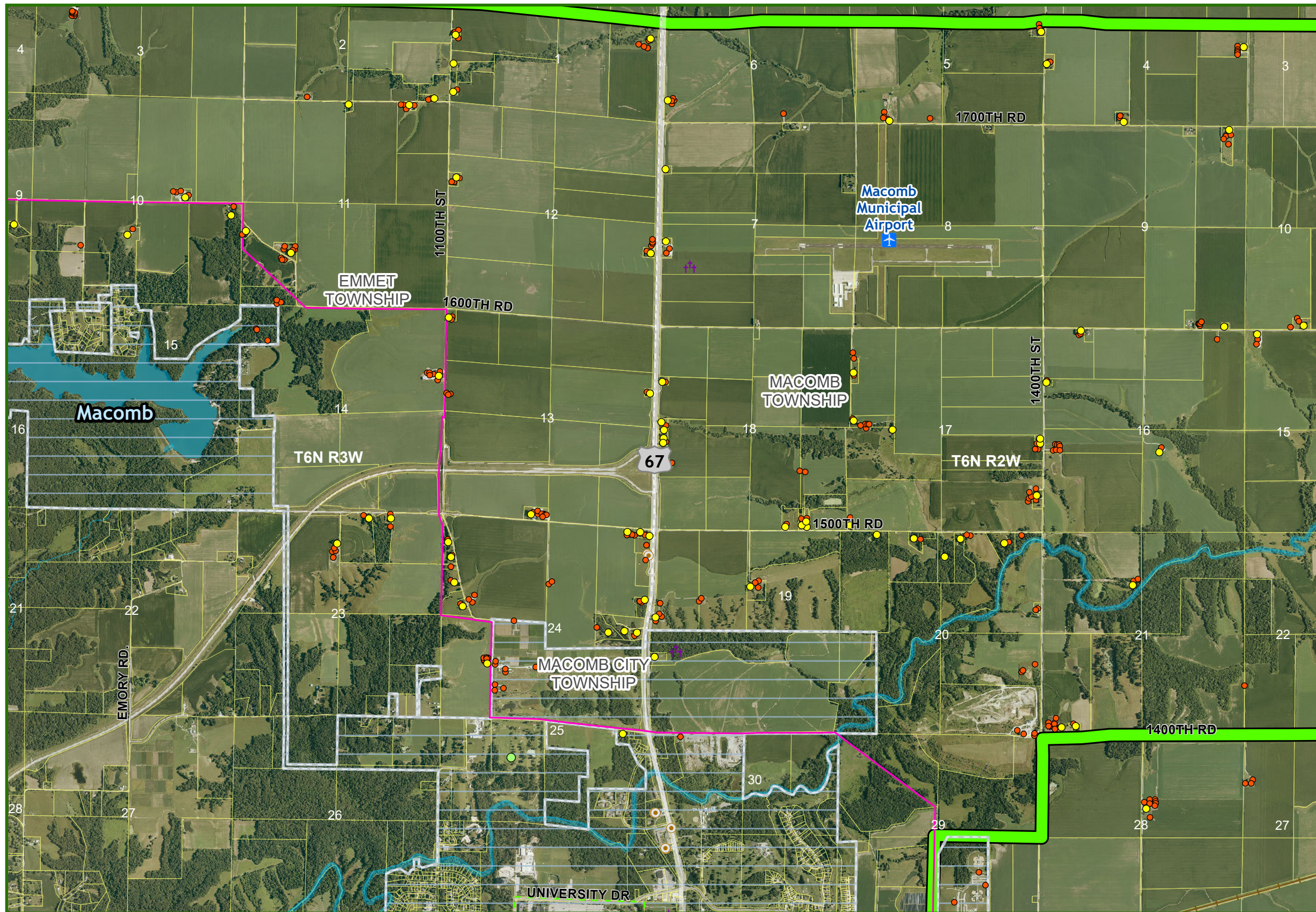
- █ APPROVED ROUTE
- SUBSTATIONS
- EXISTING LINES
- - - 69 KV
- 138 KV
- 161 KV
- 230 KV
- 345 KV
- COUNTY
- TOWNSHIP
- CITY
- PARCELS
- IL DNR LANDS
- +— RAILROAD
- WATERBODY
- - - IL BIOLOGICAL SIGNIFICANCE STREAM
- NON-RESIDENCE
- RESIDENCE
- ▴ SCHOOL OR COLLEGE
- H HOSPITALS
- GOLF COURSE
- ⛆ CEMETRY
- ◇ PLACE OF WORSHIP
- ⊙ AIR NAVIGATION DEVICE
- ✈ AIRPORT
- ⊙ COMMUNICATION TOWER



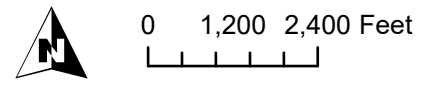


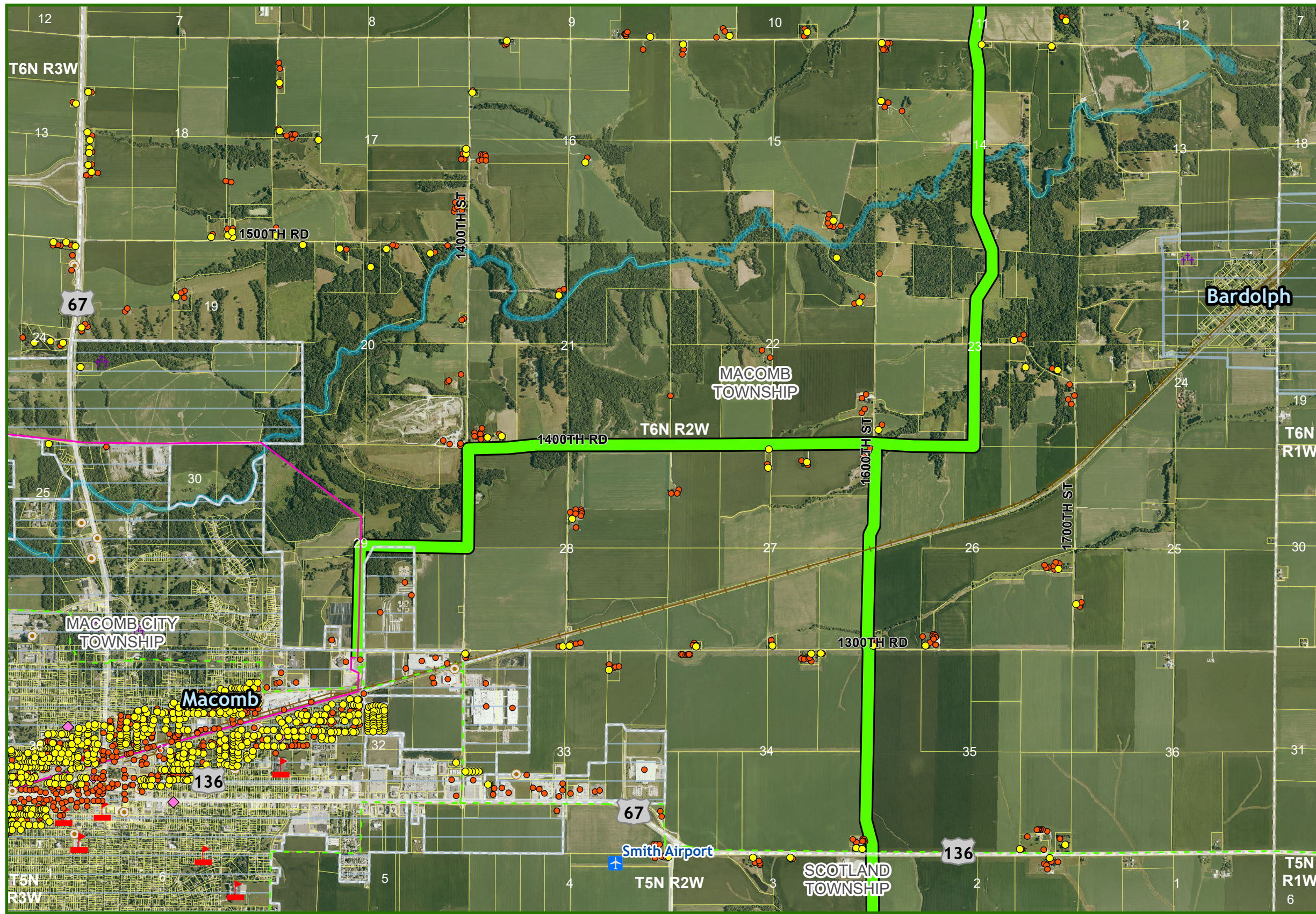
- █ APPROVED ROUTE
- SUBSTATIONS
- EXISTING LINES
 - - - 69 KV
 - 138 KV
 - 161 KV
 - 230 KV
 - 345 KV
- COUNTY
- TOWNSHIP
- CITY
- PARCELS
- IL DNR LANDS
- +— RAILROAD
- WATERBODY
- - - IL BIOLOGICAL SIGNIFICANCE STREAM
- NON-RESIDENCE
- RESIDENCE
- ▴ SCHOOL OR COLLEGE
- H HOSPITALS
- GOLF COURSE
- ✝ CEMETRY
- ◇ PLACE OF WORSHIP
- ⊙ AIR NAVIGATION DEVICE
- ✈ AIRPORT
- ⊙ COMMUNICATION TOWER



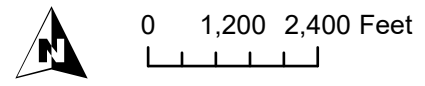


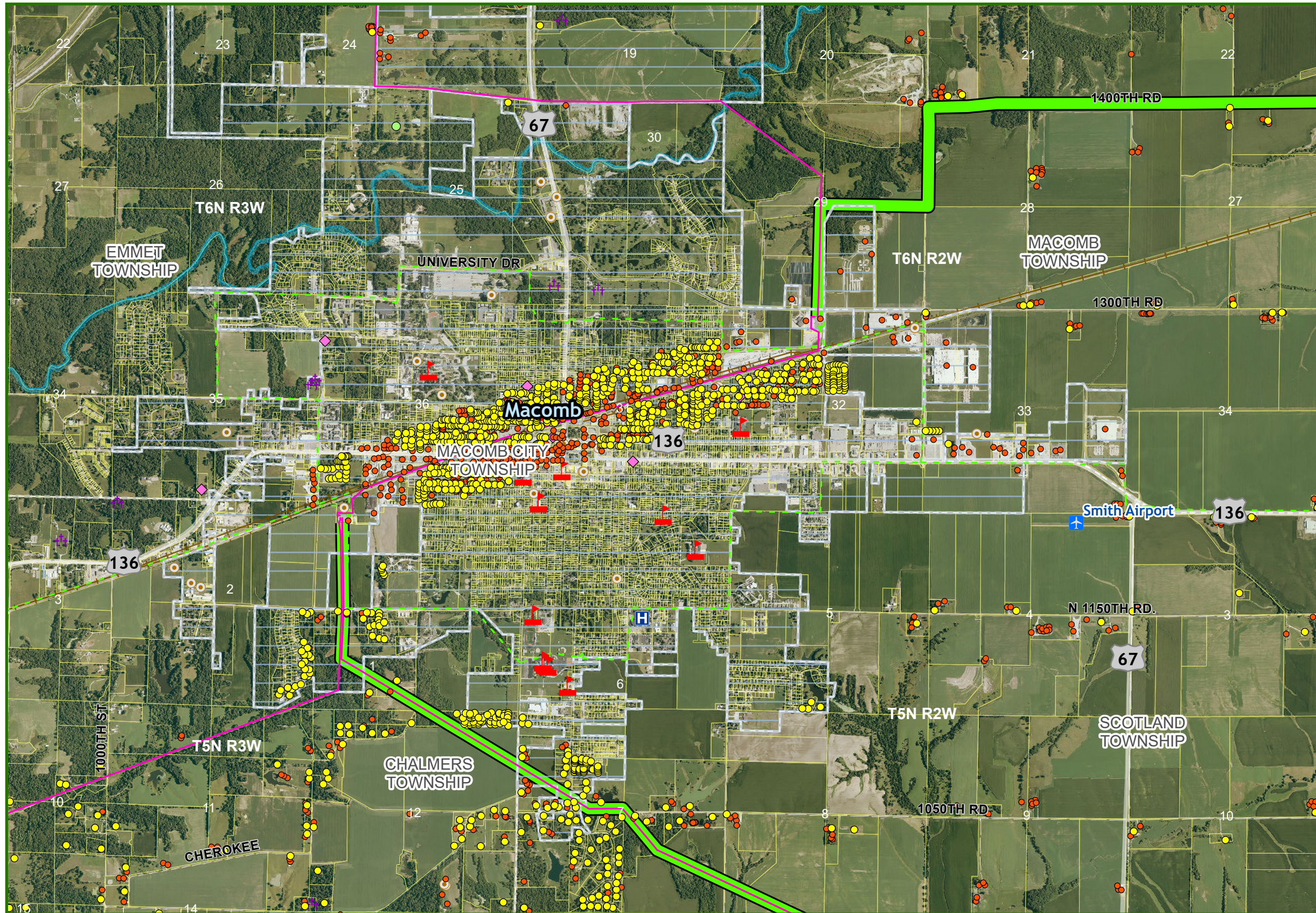
- APPROVED ROUTE
- SUBSTATIONS
- EXISTING LINES
 - 69 KV
 - 138 KV
 - 161 KV
 - 230 KV
 - 345 KV
- COUNTY
- TOWNSHIP
- CITY
- PARCELS
- IL DNR LANDS
- RAILROAD
- WATERBODY
- IL BIOLOGICAL SIGNIFICANCE STREAM
- NON-RESIDENCE
- RESIDENCE
- SCHOOL OR COLLEGE
- HOSPITALS
- GOLF COURSE
- CEMETRY
- PLACE OF WORSHIP
- AIR NAVIGATION DEVICE
- AIRPORT
- COMMUNICATION TOWER



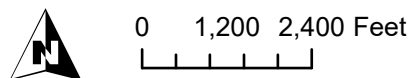


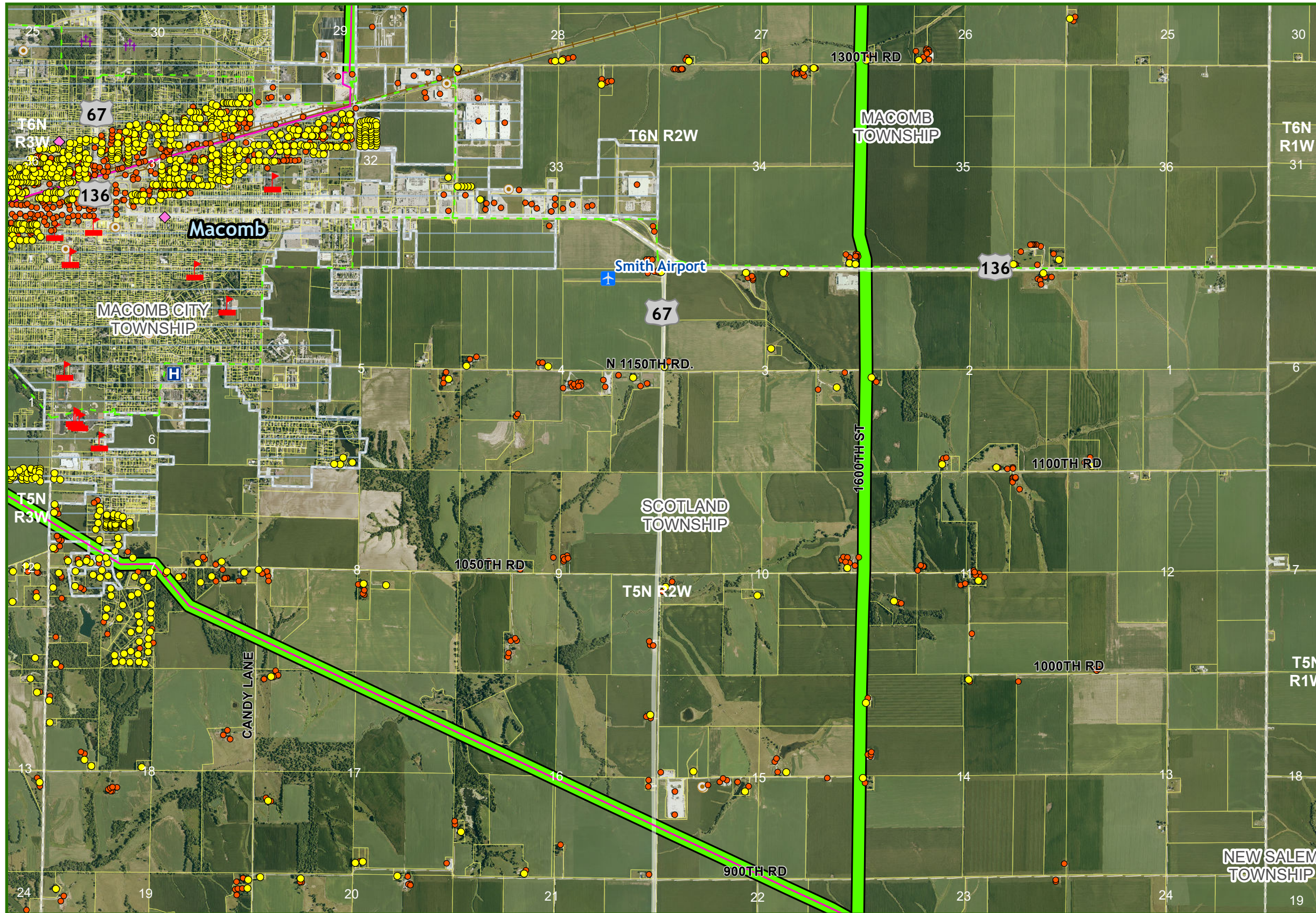
- █ APPROVED ROUTE
- SUBSTATIONS
- EXISTING LINES
 - - - 69 KV
 - 138 KV
 - 161 KV
 - 230 KV
 - 345 KV
- COUNTY
- TOWNSHIP
- CITY
- PARCELS
- IL DNR LANDS
- RAILROAD
- WATERBODY
- IL BIOLOGICAL SIGNIFICANCE STREAM
- NON-RESIDENCE
- RESIDENCE
- ▴ SCHOOL OR COLLEGE
- H HOSPITALS
- GOLF COURSE
- ✠ CEMETRY
- ◆ PLACE OF WORSHIP
- ⊙ AIR NAVIGATION DEVICE
- ✈ AIRPORT
- ⊙ COMMUNICATION TOWER



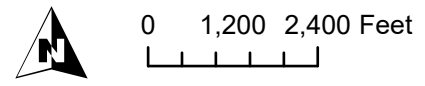


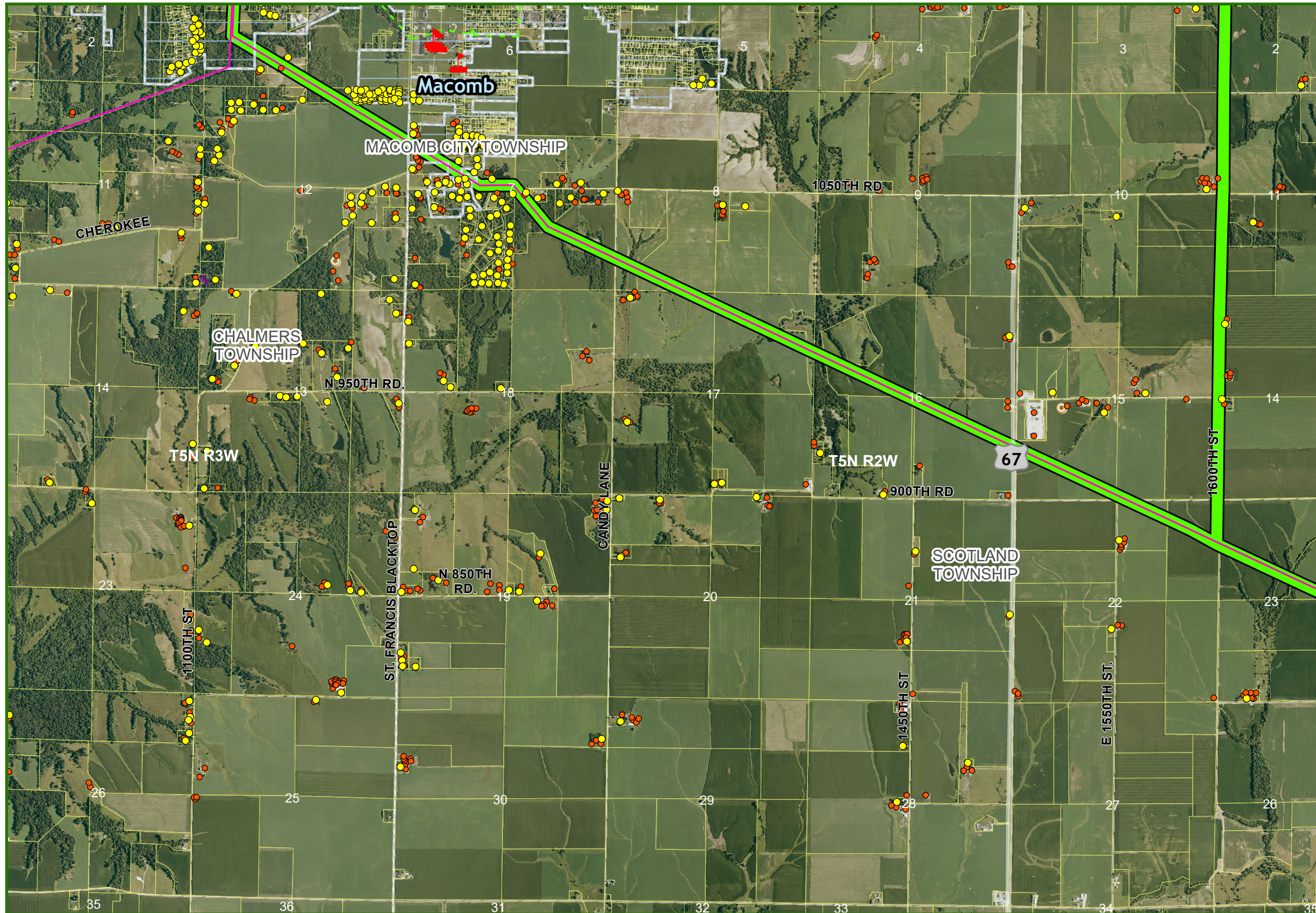
- █ APPROVED ROUTE
- SUBSTATIONS
- EXISTING LINES
 - - - 69 KV
 - 138 KV
 - 161 KV
 - 230 KV
 - 345 KV
- COUNTY
- TOWNSHIP
- CITY
- PARCELS
- IL DNR LANDS
- RAILROAD
- WATERBODY
- IL BIOLOGICAL SIGNIFICANCE STREAM
- NON-RESIDENCE
- RESIDENCE
- ▴ SCHOOL OR COLLEGE
- H HOSPITALS
- GOLF COURSE
- ✝ CEMETRY
- ◆ PLACE OF WORSHIP
- ⊙ AIR NAVIGATION DEVICE
- ✈ AIRPORT
- ⊙ COMMUNICATION TOWER



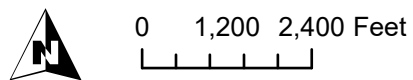


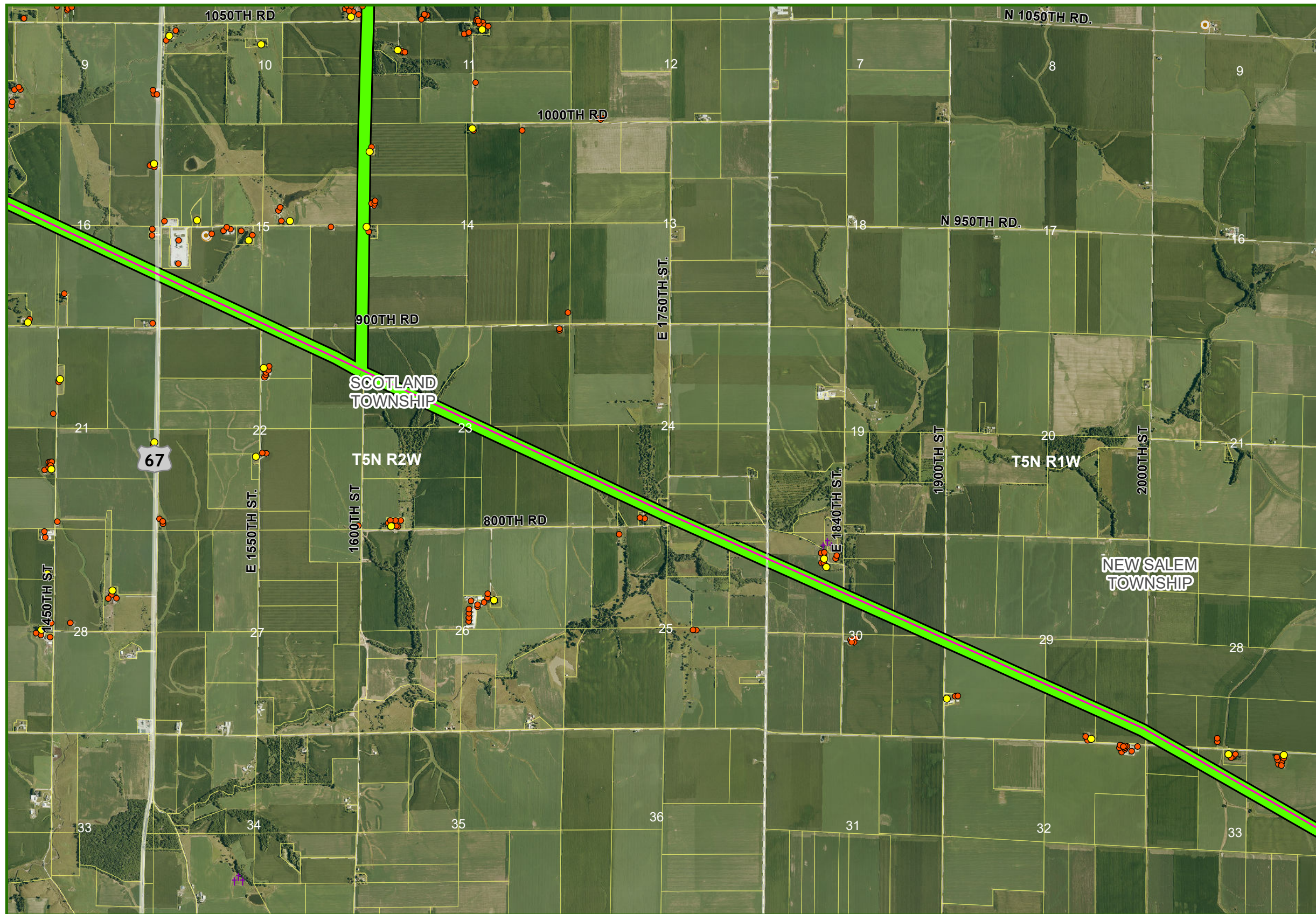
- █ APPROVED ROUTE
- SUBSTATIONS
- EXISTING LINES
 - - - 69 KV
 - 138 KV
 - 161 KV
 - 230 KV
 - 345 KV
- COUNTY
- TOWNSHIP
- CITY
- PARCELS
- IL DNR LANDS
- RAILROAD
- WATERBODY
- - - IL BIOLOGICAL SIGNIFICANCE STREAM
- NON-RESIDENCE
- RESIDENCE
- ▴ SCHOOL OR COLLEGE
- H HOSPITALS
- GOLF COURSE
- ✝ CEMETRY
- ◆ PLACE OF WORSHIP
- ⊙ AIR NAVIGATION DEVICE
- ✈ AIRPORT
- ⊙ COMMUNICATION TOWER



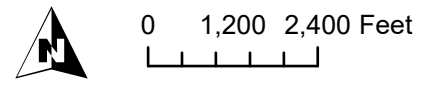


- █ APPROVED ROUTE
- SUBSTATIONS
- EXISTING LINES
 - 69 KV
 - 138 KV
 - 161 KV
 - 230 KV
 - 345 KV
- COUNTY
- TOWNSHIP
- CITY
- PARCELS
- IL DNR LANDS
- RAILROAD
- WATERBODY
- IL BIOLOGICAL SIGNIFICANCE STREAM
- NON-RESIDENCE
- RESIDENCE
- ▴ SCHOOL OR COLLEGE
- H HOSPITALS
- GOLF COURSE
- ✝ CEMETRY
- ◆ PLACE OF WORSHIP
- ⊙ AIR NAVIGATION DEVICE
- ✈ AIRPORT
- ⊙ COMMUNICATION TOWER





- APPROVED ROUTE
- SUBSTATIONS
- EXISTING LINES
 - 69 KV
 - 138 KV
 - 161 KV
 - 230 KV
 - 345 KV
- COUNTY
- TOWNSHIP
- CITY
- PARCELS
- IL DNR LANDS
- RAILROAD
- WATERBODY
- IL BIOLOGICAL SIGNIFICANCE STREAM
- NON-RESIDENCE
- RESIDENCE
- SCHOOL OR COLLEGE
- HOSPITALS
- GOLF COURSE
- CEMETRY
- PLACE OF WORSHIP
- AIR NAVIGATION DEVICE
- AIRPORT
- COMMUNICATION TOWER





- APPROVED ROUTE
- SUBSTATIONS
- EXISTING LINES
- 69 KV
- 138 KV
- 161 KV
- 230 KV
- 345 KV
- COUNTY
- TOWNSHIP
- CITY
- PARCELS
- IL DNR LANDS
- RAILROAD
- WATERBODY
- IL BIOLOGICAL SIGNIFICANCE STREAM
- NON-RESIDENCE
- RESIDENCE
- SCHOOL OR COLLEGE
- HOSPITALS
- GOLF COURSE
- CEMETRY
- PLACE OF WORSHIP
- AIR NAVIGATION DEVICE
- AIRPORT
- COMMUNICATION TOWER

