

Central Illinois Grid

TRANSFORMATION PROGRAM



Ameren Transmission Company of Illinois (ATXI) and Ameren Illinois are working together to build a more reliable and resilient energy grid for the future. The Central Illinois Grid Transformation Program (Program) includes approximately 380 miles of new or upgraded transmission lines across central Illinois, with the vast majority to be rebuilt along existing corridors and co-located with existing Ameren Illinois facilities. The Program also includes building three new substations and upgrades to existing substations.

PROGRAM BENEFITS

- ⚡ Increasing transmission capacity to meet changing energy needs.
- ✓ Supporting lower energy supply costs.
- 🏠 Improving energy reliability for the surrounding region and local communities.
- ⚡ Promoting access to diverse energy sources.
- 📍 Growing economic development opportunities.

SCHEDULE

SPRING THROUGH SUMMER 2023

Project planning and initial stakeholder engagement

SUMMER THROUGH EARLY FALL 2023

Routing, public engagement

FALL THROUGH WINTER 2023

Finalize route(s)

EARLY 2024

File final route(s) Illinois Commerce Commission
Real estate begins

LATE 2024 THROUGH EARLY 2025

Receive a CPCN decision from ICC
Permitting and agency coordination
Environmental studies / surveys

MID 2026

Construction (different start dates in each community)

JUNE 2029

Program in service

2030

Restoration complete

**All items shown are pending regulatory approvals. Schedule is subject to change.*

PROGRAM MAP



PRECONSTRUCTION SURVEY ACTIVITIES



FIELD SURVEYS

All field survey data we collect allows our scientists and engineers to plan and design the line with the information necessary for construction. The survey conducted on your property assists the team to understand and address concerns or unique property features that may be present.



WILDLIFE HABITAT SURVEYS

Wildlife surveys provide important data about the species living in the area, helping us plan how to minimize impacts to wildlife and habitat. Information from the Illinois Department of Natural Resources and US Fish and Wildlife Service helps determine the type of wildlife and habitat that may be present.



WETLAND AND STREAM SURVEYS

The wetland and stream surveys consist of field visits to locations that have been previously mapped as a stream or show wet patterns in aerial photographs in order to determine if these features should be classified as a wetland or a stream based on US Army Corps of Engineers guidelines. The crew will collect location data, photographs, and field notes on vegetation, hydrology, and soil characteristics for each feature.



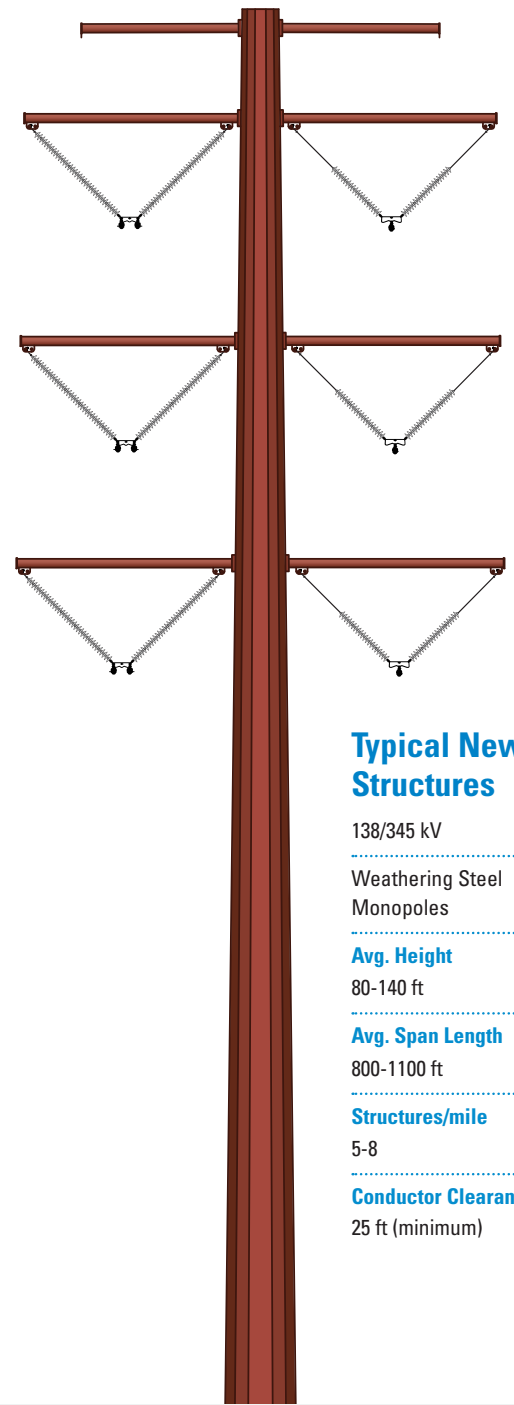
ARCHAEOLOGICAL SURVEYS

Archaeological surveys consist of walking the easement area to look for cultural artifacts on the ground. If artifacts are found, they are collected for further analysis. If a culturally-significant site is identified, additional testing may be required to determine if it is eligible for the National Register of Historic Places.



SOIL SURVEYS

As a part of the project, engineering staff will design the foundation for each transmission line structure. Conducting soil analyses on areas designated for the transmission line structures will help to determine the final design and structure locations. The excavation of soil samples helps our engineering team make calculations of the necessary depth and diameter of each structure foundation.



Typical New Structures

138/345 kV

Weathering Steel Monopoles

Avg. Height

80-140 ft

Avg. Span Length

800-1100 ft

Structures/mile

5-8

Conductor Clearance

25 ft (minimum)

VOLKERT



MEET OUR REAL ESTATE TEAMS!

Volkert, Contract Land Staff (CLS), and Emerald Energy, real estate consultant firms retained on behalf of ATXI and Ameren Illinois, will continue assisting landowners throughout the real estate process by discussing upcoming project activities including, surveying, easement documents, property access, compensation, construction, and restoration. Land agents will explain in detail what these activities involve and can answer any specific questions you may have.

We look forward to working with you and appreciate the community's cooperation thus far. As always, if you have concerns or questions, please contact us. We also encourage you to visit our website for more information and to sign up for project email updates.

 Ameren.com/Central-IL-Grid  connect@AmerenGridIL.com  800.707.0803



Scan this code to learn more and sign up for email alerts